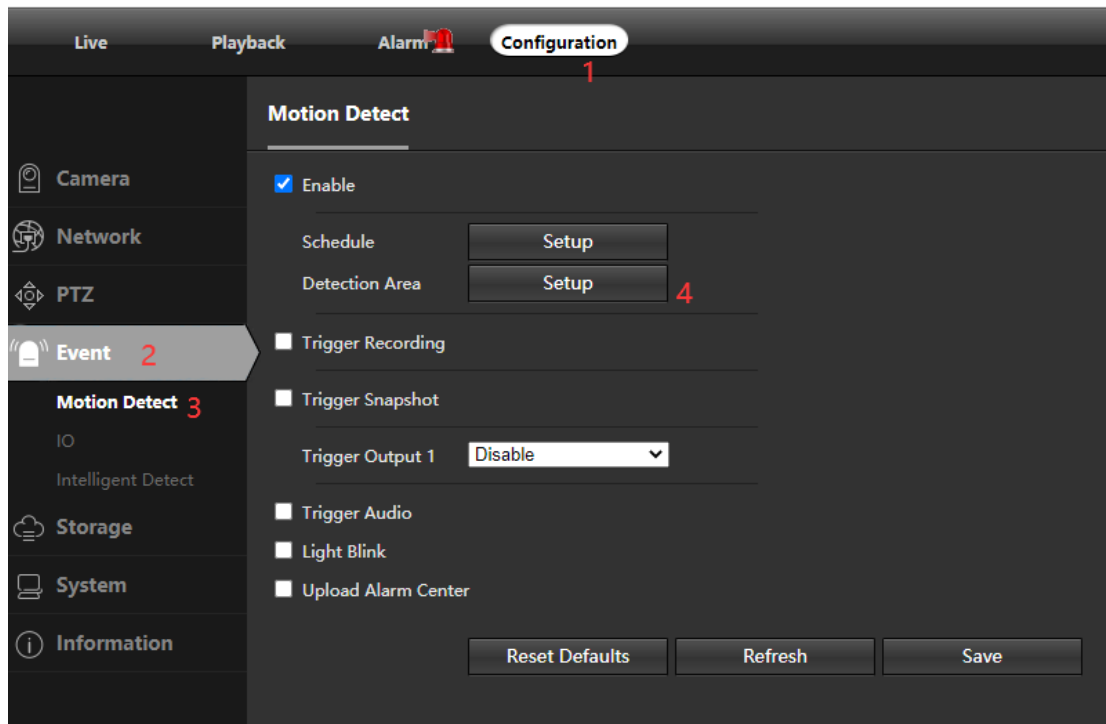


How to Set Motion Detection in IP Camera

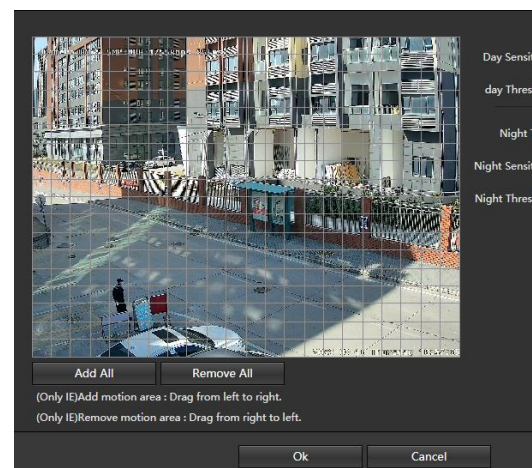
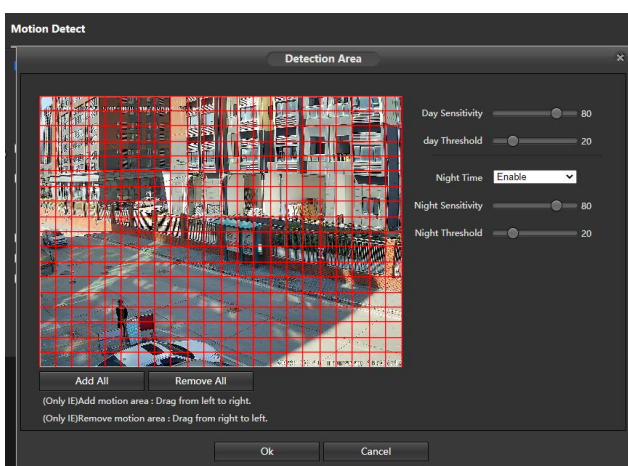
1- Login your IP Camera through WEB Browser, and select “Configuration”> “Event” > “Motion Detect” > “Detection Area”, Like picture as below:



2- When enter “Detection Area”, you are able to draw a specify area for motion detection only. The motion area will be marked in red grid. Like picture below.

Remark: The first picture below all marked in red grid means the whole area will be set for motion, you can drag from left to right to set your preferred are.

The second picture marked all grey means no motion area set for alarm.



3- If above settings succeed, let's setup “mobile Application”. Please find “Network” > “P2P”, you have to “Enable” the P2P function, and “Cloud Type” choose “DANALE”. There will be a QR code here.


Then please download “DANALE” from APP Store or Google market. And use “DANALE” to scan this QR code. And while you've enabled notification on your phone, you will receive notification when any movement happened.

Live

Playback

Alarm 

Configuration

 Camera

 Network

Basic

Service Ports

P2P


SMTP (Email)


FTP


RTMP


Alarm Server Center


Connect Check

 PTZ

 Event

 Storage

 System

 Information

P2P

Enable ☒

Cloud Type DANALE

Login Status Offline

Cloud ID

QR Code

Note: Please wait a moment, it may take about 3 - 5 minutes to get online after enable cloud service.

Reset Defaults

Refresh

Save