

# How to change NVR recorder output resolution

## Of GWSECU Security System

Sometimes when we connect our NVR system into a monitor through HDMI but it's unable to display or recognize any signals, this might be some of the monitors were too old and the resolution may doesn't match, so, we have to change the NVR's output resolution to match the monitor.

1. Please make sure that your system had connected to your router/switch that with internet access. And prepare a computer connected in same network, which means the recorder's IP address must be in same gateway with your computer. For example, the recorder IP 192.168.1.44 and computer IP 192.168.1.45.




2. Please download tool from our website.


[http://www.gwsecu.com/Uploadfile/file/Software/NVR\\_3\\_Series/GuardTools-R1122.2.3.2\(IN\).exe](http://www.gwsecu.com/Uploadfile/file/Software/NVR_3_Series/GuardTools-R1122.2.3.2(IN).exe)

(Click to download),

or visit our website as below: <http://www.gwsecu.com/support/?sortID=1>

gwsecu.com/support/?sortID=1

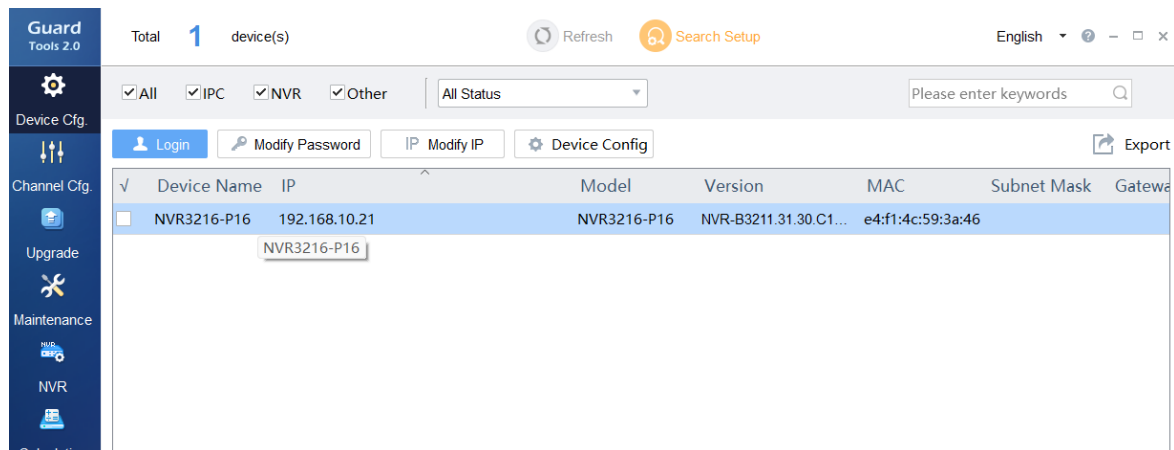
Home Products Solutions News & Events Support Company



## Software

Name	Description	Version	Size	Operating
NVR APP_iOS		2101I-1.13.0	28 MB	<a href="#">Download</a>
NVR APP_android		R2101.2.27.3	51 MB	<a href="#">Download</a>
NVR Player		1111-1.0.7	32 MB	<a href="#">Download</a>
Tools of NVR		R1122.2.3.2	45 MB	<a href="#">Download</a>
NVR CMS Software_Win64		B1130.3.11.0	54.58 MB	<a href="#">Download</a>
NVR CMS Software_MAC		B1113.3.10.0	82 MB	<a href="#">Download</a>
IP Camera Search Tools		V5.7.3	17.5 MB	<a href="#">Download</a>

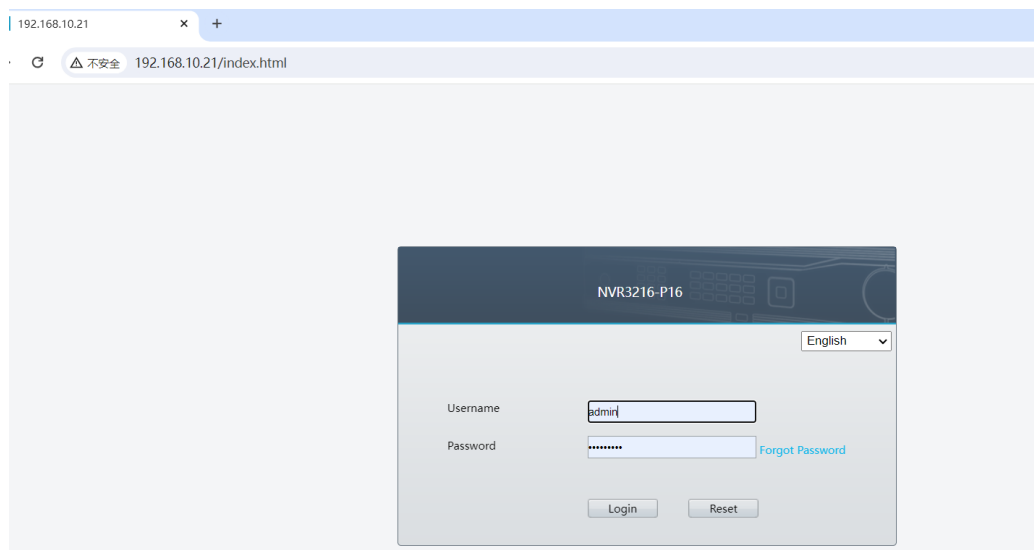
3. After downloaded and installed this tool, you will find NVR recorder connected. Like below.



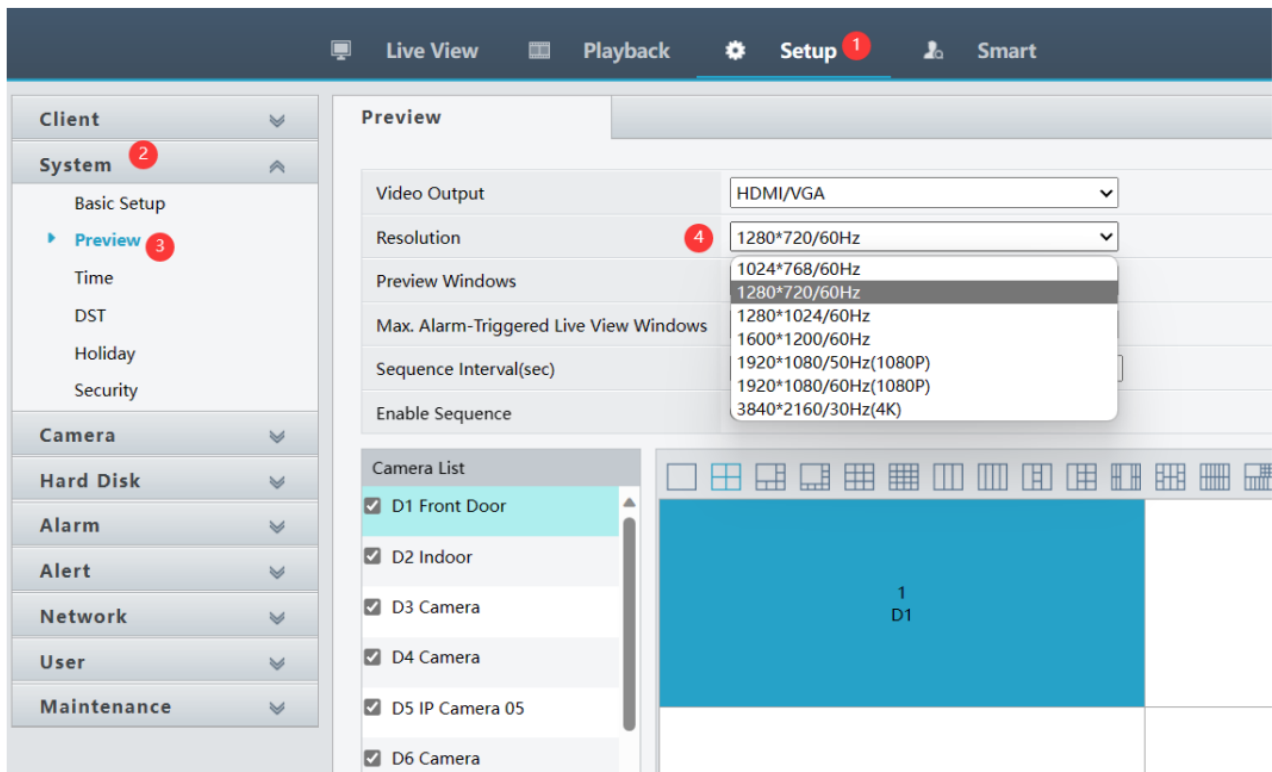
4. When you find this IP address, please input it into web browser (**Google chrome recommended**) to login camera's WEB page, and login with your account and password (This is the NVR system password that you've set by yourself). If it's the brand-new system, the default password as below:

8ch and 16ch system: default user name: admin, default password: 123456

32ch system: default user name: admin, default password: 1234@abcd



5- Login our system with the username and password. And select "Setup">" System">" Preview">" Resolution", and change it into a lowest resolution to make the system match your monitor.



Of course, it's better that you know the resolution of your monitor, or better to use a 1080P or 4K resolution monitor for the best user experience of our system to view a sharp and clear video quality.

If any questions, please contact to us via email: [support@gwsecu-cctv.com](mailto:support@gwsecu-cctv.com) or WhatsApp as below.

