

How to upgrade GWSECU NVR firmware

Firstly, decompress the NVR firmware that we provided. And find the program.bin file.

1- Through USB

Note: Please use USB2.0 port on your computer to format with FAT32.
Do NOT format with exFAT that may not support.

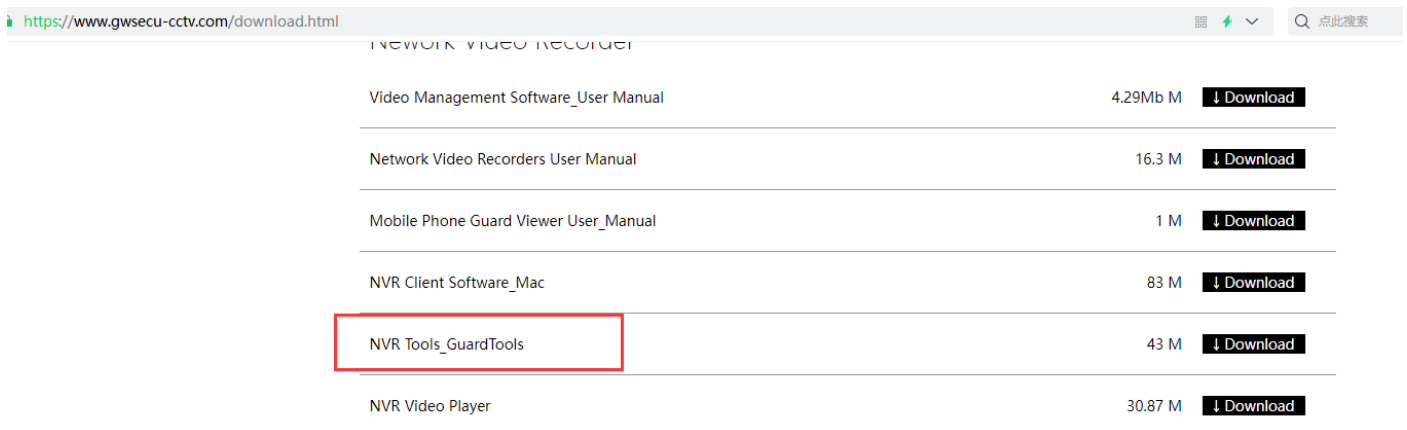
Please prepare a USB driver and format it into FAT32. When you copy the file into USB drive and upgrade it, you shall select "local" not cloud. I made a video for your reference.

<https://youtu.be/ZoXyNscxRzI>

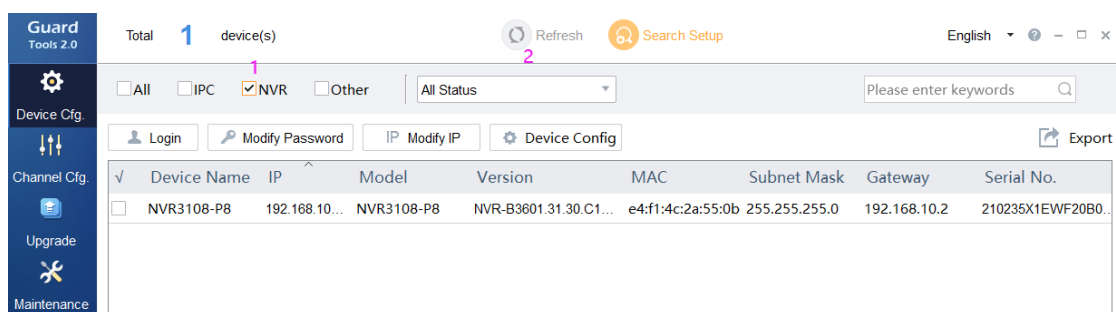
2- Through PC Tools

Note: PC tools required your NVR recorder must be connected in same network (router or switch) with your computer. Which means the computer IP address is in same IP segment with your NVR, for example 196.168.1.xx

2-1. Please download the "Guard Tools" from GWSECU website too.



2-2. After install this software on your computer. You can select "NVR" and NVR recorder will be found.



2-3. Select "Upgrade" on the left menu, found your device and login with your NVR's user name and

password. Then select "Upgrade".

The screenshot shows the Guard Tools 2.0 interface. On the left sidebar, the 'Upgrade' option is highlighted with a red arrow and a pink number '1'. The main area displays a table of devices under the 'Local Upgrade' tab. A pink number '2' points to the 'Login' button. A pink number '3' points to the 'Upgrade' button at the bottom right.

✓	Device Name	IP	Model	Version	MAC	Subnet Mask	Gateway	Serial No.
✓	NVR3108-P8	192.168.10...	NVR3108-P8	NVR-B3601.31.30.C1...	e4:f1:4c:2a:55:0b	255.255.255.0	192.168.10.2	210235X1EWF20B0.

2-4. Select firmware like step as below.

This block shows two overlapping windows. The background window is the 'Offline Upgrade (192.168.10.66)' dialog, which has a table of devices. A red arrow with a pink number '1' points to the first device in the table, with a label 'select device'. Another red arrow with a pink number '2' points to the 'Upgrade File' field, with a label 'select firmware path'. A pink number '5' points to the 'OK' button, with a label 'click "ok"'. The foreground window is a file explorer showing a folder named 'NVR302S_304S_301LX_P_Cus...'. It contains a file named 'Program.bin' with a size of 44,421 bytes. A red arrow with a pink number '4' points to this file, with a label 'found firmware and select ok'. Another red arrow with a pink number '3' points to the file type filter 'bin Files (*.bin)', with a label 'select ".bin" file'.

2-5. Check the uploading status.

Note: Please don't turn off the power of the NVR during the upgrading procedure.

Channel Cfg.

Upgrade

Maintenance

NVR

Calculation

Local UpgradeOnline Upgrade

Version	MAC	Subnet Mask	Gateway	Serial No.	Device Sta	Upgrade Progre	Operation Sta
NVR-B3601.31.30.C1...	e4:f1:4c:2a:55:0b	255.255.255.0	192.168.10.2	210235X1EWF20B0...	Logged in	1%	Uploading...

you can roll this to the right and check upgrade status.

If any questions, please contact our technicians. support@gwsecu-cctv.com