

How to upgrade GWSECU NVR firmware

Firstly, download the firmware from the link that our technician sends you https://drive.google.com/file/d/1R-VExdW3mRf4Rq1SKqFTjB5uiYQBSkD9/view?usp=drive_link

or from our website. <https://www.gwsecu-cctv.com/download.html>

Select related NVR firmware to download.

<https://www.gwsecu-cctv.com/download.html>

[FAQ](#)
[Download](#)
[Video](#)

Download

Security Camera System

GWSECU NVR Firmware39.5 M[↓ Download](#)

1- Through USB

Note: Please use USB2.0 port on your computer to format with FAT32.

Do NOT format with exFAT that may not support.

Please prepare a USB driver and format it into FAT32. When you copy the file into USB drive and upgrade it, you shall select "local" not cloud. I made a video for your reference.

<https://youtu.be/ZoXyNscxRzI>

2- Through PC Tools

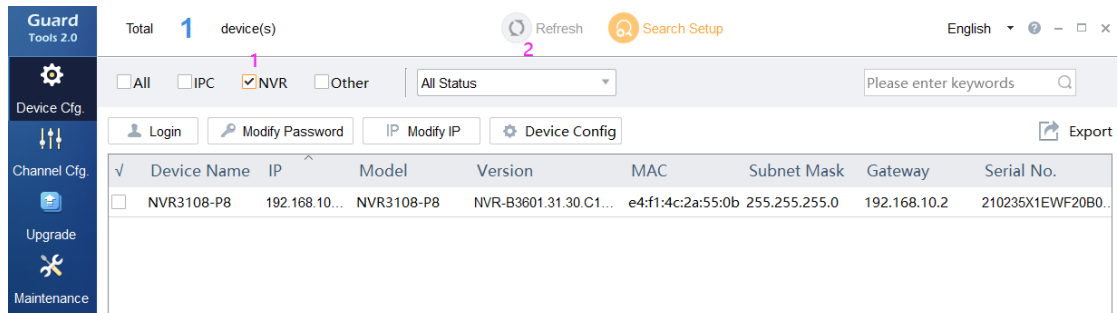
Note: PC tools required your NVR recorder must be connected in same network (router or switch) with your computer. Which means the computer IP address is in same IP segment with your NVR, for example 196.168.1.xx

2-1. Please download the "Guard Tools" from GWSECU website too.

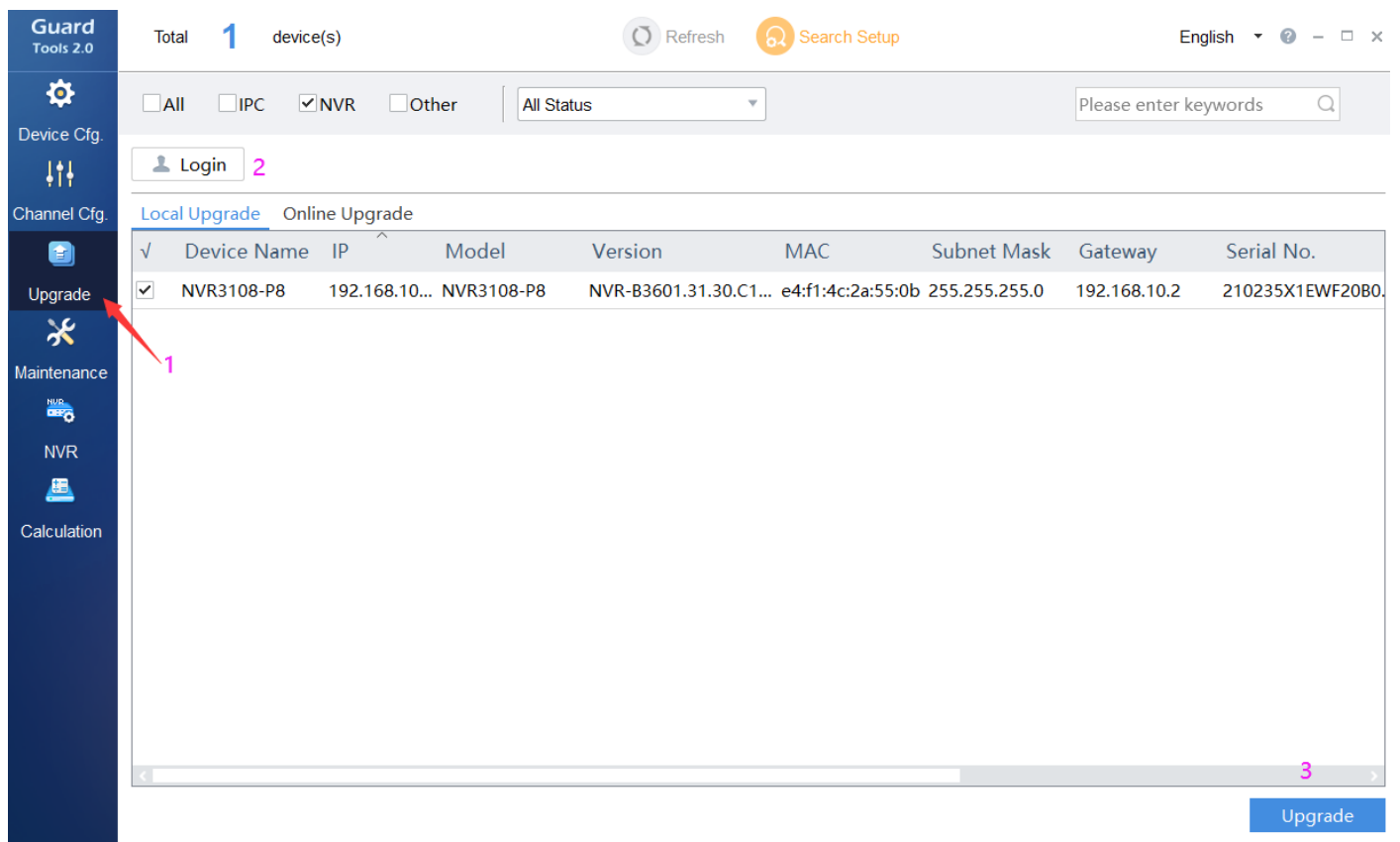
<https://www.gwsecu-cctv.com/download.html>

NETWORK VIDEO RECORDER	
Video Management Software_User Manual	4.29Mb M ↓ Download
Network Video Recorders User Manual	16.3 M ↓ Download
Mobile Phone Guard Viewer User_Manual	1 M ↓ Download
NVR Client Software_Mac	83 M ↓ Download
NVR Tools_GuardTools	43 M ↓ Download
NVR Video Player	30.87 M ↓ Download

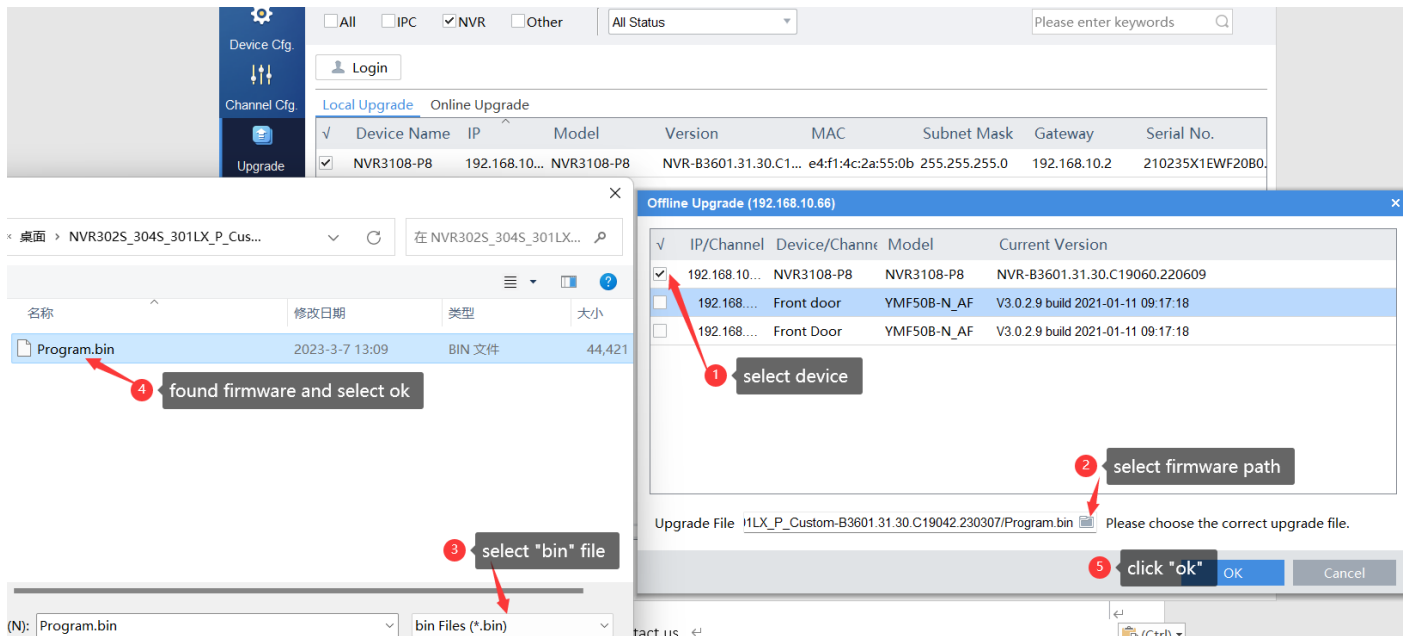
2-2. After install this software on your computer. You can select "NVR" and NVR recorder will be found.



2-3. Select “Upgrade” on the left menu, found your device and login with your NVR’s user name and password. Then select “Upgrade”.

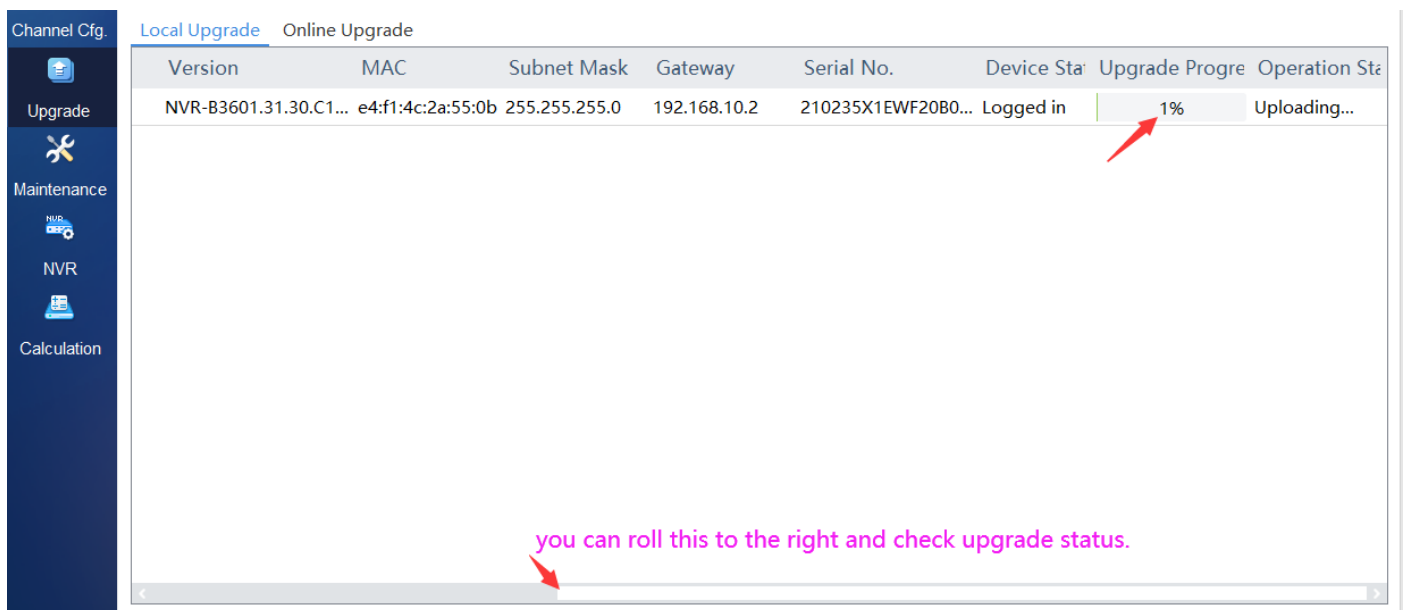


2-4. Select firmware like step as below.



2-5. Check the uploading status.

Note: Please don't turn off the power of the NVR during the upgrading procedure.



If any questions, please contact our technicians. support@gwsecu-cctv.com