

Video Surveillance System C/S Client Operating Instructions

Content

1. Summary	5
2. Operation Environment	5
2.1 PC Configuration Requirements.....	5
2.2 Operating System Requirements	5
3. Software Installation and Uninstall	5
3.1 Software Installation	5
3.2 Software Uninstall	5
4.Login	6
5. Main Interface.....	6
5.1 Device List Area	7
5.1.1 Equipment Search	7
5.1.2 Equipment Show	7
5.1.3 Grouping Devices.....	7
5.1.4 Talkback.....	8
5.2 Display Area	8
5.3 Screen Switch Area	9
5.4 Interface Operating Area	9
5.5 Interface Switch Area	9
6. Device Management.....	10
6.1 Add Device	10
6.2 Login Settings	10

6.3 Device Settings.....	11
6.3.1 Device info	12
6.3.2 Device Management.....	12
6.3.3 Media Setup	12
6.3.4 Trigger.....	12
6.3.5 Schedule	12
6.3.6 Alarm Setup	12
6.3.7 Platform	12
6.3.8 PTZ.....	12
6.3.9 Account.....	13
6.3.10 Storage.....	13
6.3.11 Maintenance.....	13
7. Playback	13
7.1 Record Search Area.....	13
7.2 Recording Information Area.....	14
7.3 Video Play Area.....	14
8. Record.....	15
8.1 Record Services.....	15
8.2 Record policy	15
8.3 Storage settings	16
9. Alarm Query.....	16
9.1 Equipment Selection Area.....	16

9.2 Query Area	16
9.3 Query Record Area.....	17
10. System Settings.....	17
10.1 General.....	17
10.2 Network.....	17
10.3 Privilege	17
10.4 Log	18

1. Summary

IPVMS are mainly applied to the monitoring center, duty room, receiving alarm room, controlling room and other occasions. It includes video surveillance, video parameter setup, network parameter setup and so on basic function. Also equipped with privacy mask and two-way voice communication and other advanced application. It is a comprehensive client software which has compact interface, multi-function, reliable performance and be easy to operate.

2. Operation Environment

2.1 PC Configuration Requirements

CPU: P4 2.4 or more

Memory: 1G above (recommended 2G or higher)

Graphic Card: 256M memory or higher


Display: support 1024 × 768 or higher resolution

2.2 Operating System Requirements

Windows 7, Windows 10 , Windows 11 series of operating system

3. Software Installation and Uninstall

3.1 Software Installation

Double-click the installation file  to install it.


3.2 Software Uninstall

Uninstall the software in the installation directory; or if you want to reinstall the software, install to the same path to cover the original installation.

Note: If you reinstall, the client must be installed in the same path to cover original.

4.Login



Double-click the Client icon , pop-up login interface. Client need to input a user name and password to login.

A dark gray login window titled 'HD Network Surveillance Device'. It contains three input fields: 'Username:', 'Password:', and 'Language:'. The 'Language:' field is a dropdown menu currently showing 'English'. Below the 'Language:' field are two checkboxes: 'Remember' and 'Auto Login'. At the bottom are two buttons: 'Login' and 'Cancel'.

Step 1: Input the correct username and password(default: admin /123456).

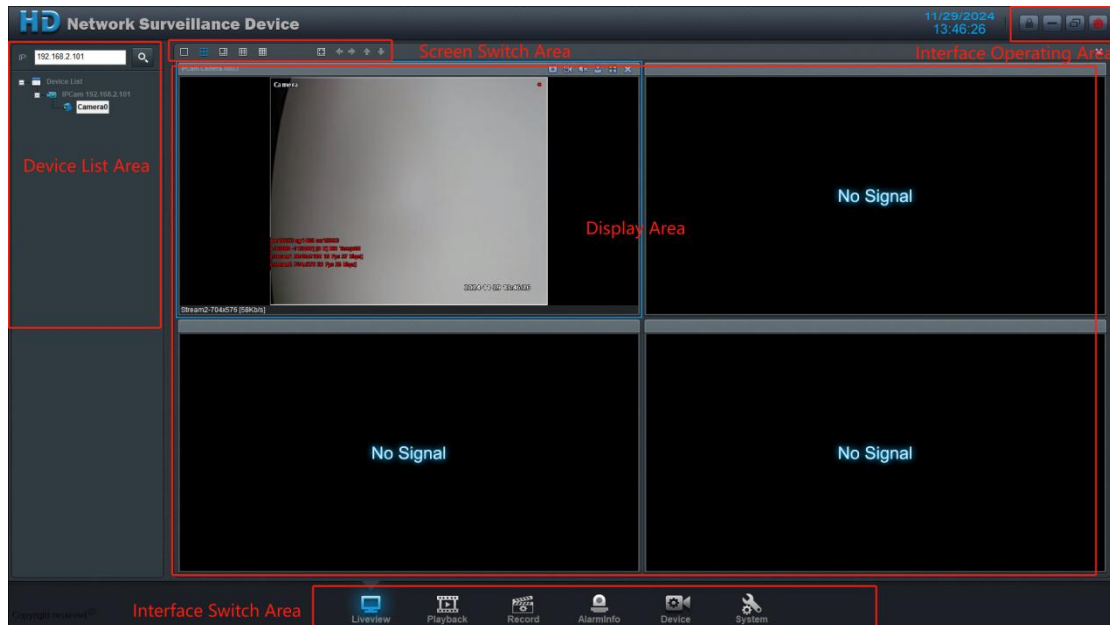
Step 2: Choose language.

Step 3: Select login option.

Step 4: Click 【login】 to login.

5. Main Interface

Enter into the main interface (can called as the live preview interface) .



Introduction of every part of the main interface

5.1 Device List Area

The left side of the main interface is device list area, In the area display devices that added.

5.1.1 Equipment Search

All devices in the search list need to be added by the device module for the search, Quickly find added devices by using the ip address search bar.

5.1.2 Equipment Show

There are two ways to display devices.

- Way1: Click "+" button to expand online devices , then double-click the , the device will display in the picture area.
- Way2: Use the mouse to drag the device which is online to display area directly, the device will be shown.

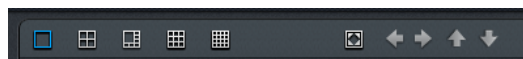
5.1.3 Grouping Devices

Right-click the [device list], select "Add group" will increase the group, you can name this group, Use the mouse to drag the device to the group, then completed the device grouping.

- full-screen: For a single video screen , double-click the left mouse on the video screen will make it full-screen.
- Screen zoom : Drag the mouse to select the area you want to magnify , scroll mouse to zoom; right-click the mouse to recovery.
- Screen movement : Drag the mouse from the screen to another screen.
- Upper left corner of the screen is the name of the device, if no name showing the IP address of the device.
- Lower left corner of the screen shows the type of device Stream, resolution, and stream information.

5.3 Screen Switch Area

Screen switch area is in the top left corner of the interface



,the main function is to switch the way of screen displaying.

- Screen switch function: The client provides a screen , four screens , eight pictures, nine screens , sixteen screen kinds of split screen display mode.
- Full screen display: Click the Full Screen button , the entire display area is in full screen mode
- Previous group and next group: Be effective for devices have been grouped,when I click previous group or the next group , it will show group after group.

5.4 Interface Operating Area

Interface operating area is located in the top right corner of the interface, it control the client's lock, scale and close function and so on, the icon represent the function as below:

	lock button		Maximize button
	Minimize button		Exit button

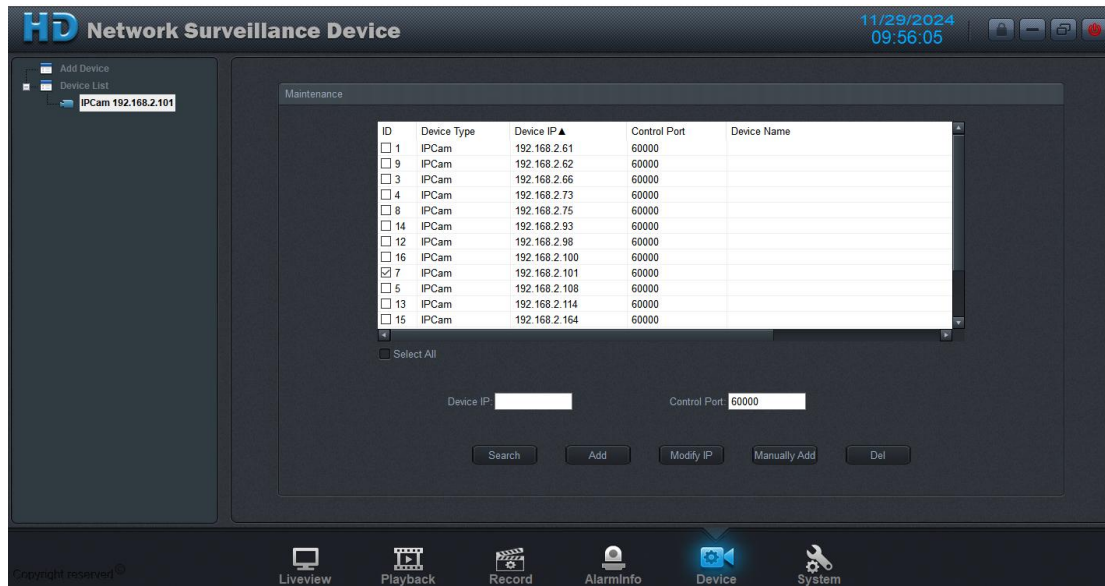
- Lock Function: Click the lock button , the client is in locked status , you need to enter the correct user name and password (both default admin) then can operate.
- Minimize button : Click the Minimize button , the client is minimized.
- Maximize button : Click the button to zoom out or maximize client.
- Exit button : Click the Exit button,pop-up the confirmation dialog menu,Click [Yes] to exit the client.

5.5 Interface Switch Area

Interface switch area is at bottom of the interface, including the main functions of the client,like Liveview, Playback, Record,Device management, Alarm information and System settings six functional areas.

6. Device Management

Click Device into the device management interface, Added devices can only be in the device list.



The function of Device to set the parameters for the device.

For example of a single equipment, operating instructions for device management: In the device selection area, select a device and double-click, bring up the device management interface and then set the device configuration.

6.1 Add Device

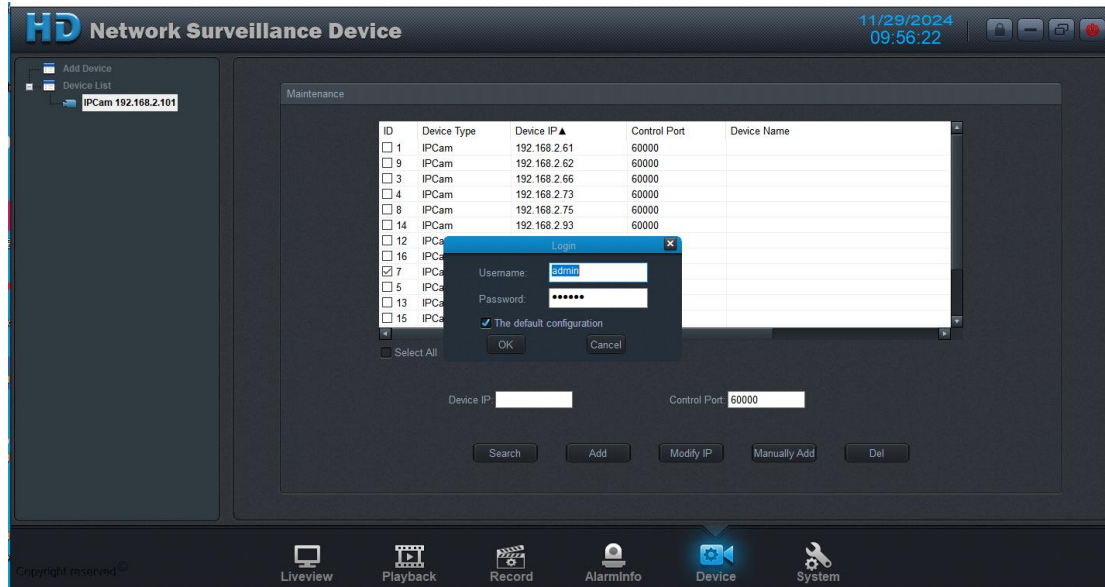
Click the Search button, you can manually search for the device.

In the input box to enter the device's IP, click the Add button, you can add a device in the directory. Default control port is 60000. Alternatively, you can check the IP addresses that have been searched for in the Maintenance form and click the add button to add them.

Click on the Delete button to remove the added device.

6.2 Login Settings

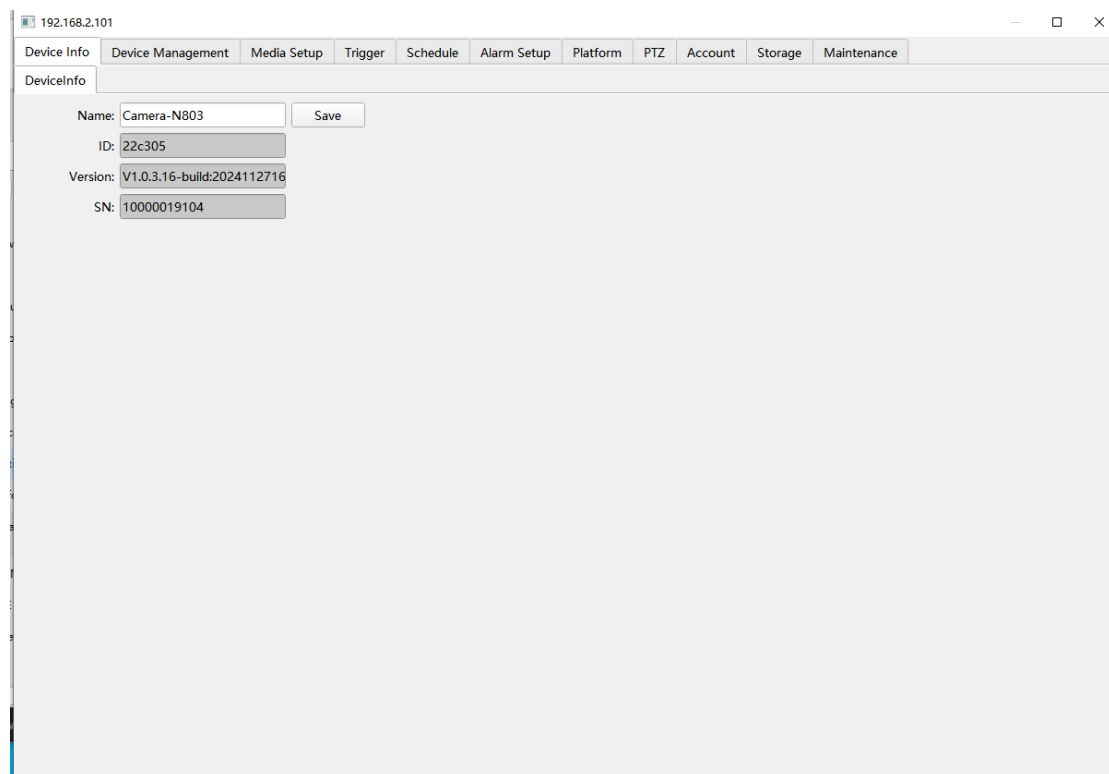
Double-click the added device to enter the login screen.



Note: When user enter the setting interface of device that selected the first time , will popup login menu, input correct user name and password(default : admin/123456).

6.3 Device Settings

Successful login will automatically pop up the device settings screen.



6.3.1 Device info

Device Information provide the device name, device ID, device type, version and SN. User can set device name. Click the Save button to confirm.

6.3.2 Device Management

Device management includes network, port, date, DDNS, SMTP, alert center, https, IP address filtering view and settings.

6.3.3 Media Setup

Media setup includes video, image, audio, OSD, privacy mask, ROI view and settings.

6.3.4 Trigger

Trigger provide the snap, record, relay, light, voice, ptz action view and settings.

6.3.5 Schedule

Trigger provide automatic triggering of actions at different times.

6.3.6 Alarm Setup

Alarm Setup provide provide Motion Detection Alarm, I/O Alarm, Human Vehicle Detection Alarm, Cross Line Detection Alarm, Perimeter Protection Alarm, Face Detection Alarm view and settings.

6.3.7 Platform

Platform provide ONVIF, RTSP, RTP, RTMP, Mobile View, HIK view and settings.

6.3.8 PTZ

PTZ provide ptz setup view and settings.

6.3.9 Account

Account provide user view and settings.

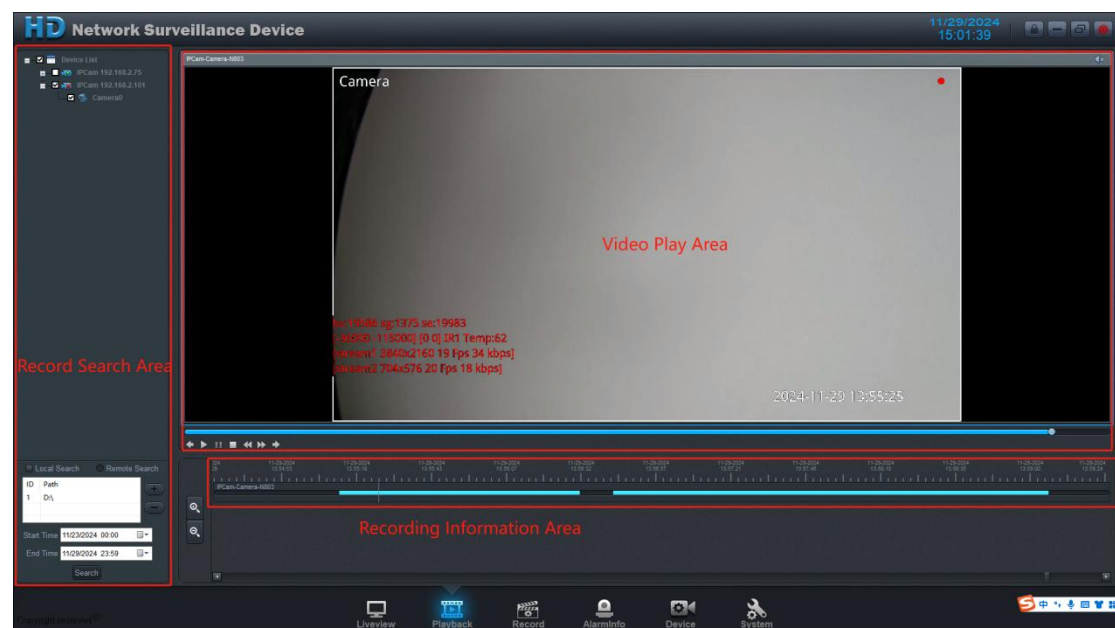
6.3.10 Storage

Storage provide SD,FTP,NAS view and settings.

6.3.11 Maintenance

Maintenance provide Reboot,Reset,AutoMaintian view and settings.

7. Playback



7.1 Record Search Area

Video Search simplifies the process by selecting a device, the path and choosing the time.

- Select Device: In the device list, select the device you want to search, you can check a single device, you can select by group or all checked.

Note: The device checked cannot be more than 4 pieces.

- Select the path: Select the "local video." click "+" button can add searching path. Click "-" button to delete Search path

Note 1: The remote recording functions depend on the device.

Note 2: The added path should be placed under the folder Rec

- Time Selection: Click the start time pull-down bar to select start time and end time pull-down bar to select end time.

Note: Interval between the start time and end time must not more than 7 days.

- When the device, path, and time selection is completed, click Search button can search out the corresponding video.

7.2 Recording Information Area

The function of recording information area is to look over record status and playing information for users.

- Video content axis

Video content axis describe recording information in the form of time, can obtain record start time and end time. Double-click the blue area or the red area (blue: timed recording, red: alarm recording) to start playing the recording.

- Video content axis zoom function.

Click the time axis, realize zoom out and in by scroll mouse.

- Scrollbar

Click the buttons on either side of the scroll bar to move the video content axis left or right, can also drag scroll bar by mouse to move the axis of video content.

- Record capture function

Drag mouse to choose the area in the video content axis, right-click the mouse to select Save As, waiting for the record capture.

7.3 Video Play Area

In the area of video play, you can control the playback through control icons.

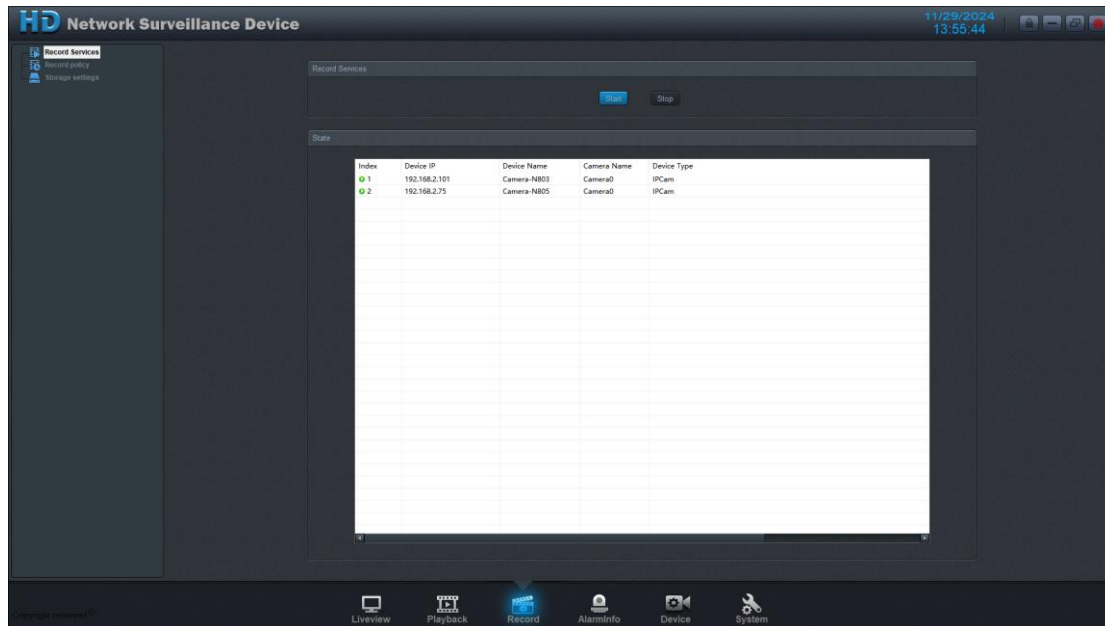
Icons of interface represent function as follows:

	Single frame backward		Stop
	Single frame forward		Fast Backward
	Play		Fast Forward
	Pause		Audio

- Single-frame playback: Click on a single frame forward or backward button, record will play in single frame forward or backward.
- Normal Play: Click to play, pause and stop buttons to control the play.
- Fast-forward and fast-backward playback: Click the button of fast forward or fast backward, video will playback in fast-forward or fast –backward mode. This function provides $\times 2$, $\times 4$, $\times 8$, and $\times 16$ four speed modes, by clicking button repeatedly to enter into every mode.

- Audio: Click the audio button, record will add the audio playback, (determined by device with its function).
- Full screen: Double click the playing area can switch the full screen.

8. Record



8.1 Record Services

In Record services interface, we can control start and stop of all the device all at once, and check their recording status and information.

- Press the start button, the whole device that connected start.
- Press the stop button, all the device that have been recording stop.

8.2 Record policy

In the interface can manage the recording information and adjust setup.

In the device list, check one device, then press Add; can select the device showed in list, press the Del button, can also check Select All button to operate.

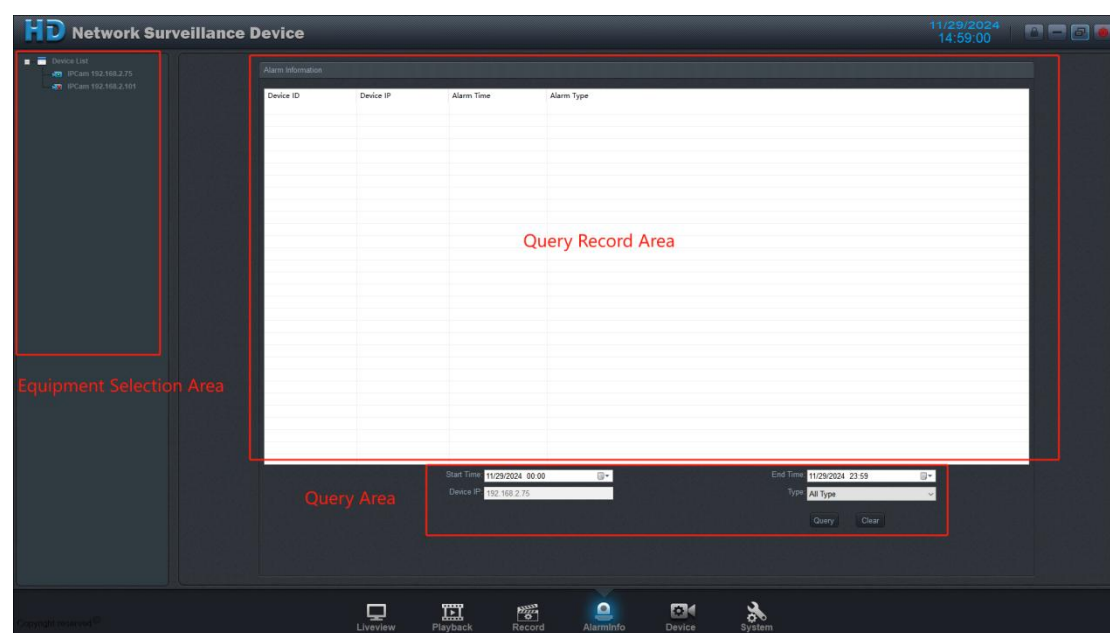
- Basic setting: Checked the device, we can switch the stream in Stream ID pull-down menu, can select Record Audio (need the device support). Two ways of storage--Overwrite when Disk is Full and reserved days by users.
- Alarm: Check Enable button, set Prerecord Time, Continue Record time, Linkage. Click the linkage button, pop-up a device list window, check device, press Save button.

- Schedule Record: Check Enable button ,we can choose Always and Schedule.After you choose the schedule, pop up setup interface,set the time,press add button.All the sets completed press save.

8.3 Storage settings

Setting the disk save path and backup path for video recordings.

9. Alarm Query



9.1 Equipment Selection Area

In the device selection area, lists the searched devices and devices that had been searched before. Click on a device you can select, query the device alarm information, The device's IP shows at the bottom of page.

9.2 Query Area

In query area by selecting the alarm's IP, time and type of query to search the alarm records, when the search condition has been selected, click query button to start.

- Device IP: After selecting the device, device IP will be displayed in blank .
- Time: Select the start time and end time in pull-down menu.
- Alarm type: Select the type of alarm in the drop-down menu.

9.3 Query Record Area

Query Record Area displays the searched alarm information, including the device ID, device IP, alarm time, alarm source ID, the name of the alarm source and alarm type and so on.

10. System Settings

Through the system settings, user can view and set various parameters about client system, including four parts: General, Network, Privilege and Log.

10.1 General

In the configuration interface, check and adjust different settings.

Can check many setting depend on your need such as Auto login, Auto Startup so on. There are priority setup etc., about the live view . At the same time, you can look the version status.

10.2 Network

- Alarm port: Input alarm port number, can assign alarm port number (default is 59911).
- Search Settings: Set the search condition, the device IP range.

Search setup steps:

Step 1: Input starting IP, end IP and port (default 60001).

Step 2: Click Add button to add in directory.

Step 3: Click Save button to save data.

You can select search condition in content when you want make it work.

10.3 Privilege

In the screen you can view and set the client's permission.

- Groups: Groups set different privilege group. User own same permission under the same group , the client provides five privileges such as real-time liveview, video playback, alarm query, device management, and system settings.

Setting steps:

Step 1: Input group name and group description.

Step 2: Check required permissions and select group permission.

Step 3: Click Add button to add the directory.

Step 4: If you need to delete or modify certain permission group, click Del button or Modify button to delete or modify.

- User Management: User Management is a window for setting user information.

Setting steps:

Step 1: Input user name and password, and confirm password.

Step 2: Select belonging group, describe the user.

Step 3: Click Add button to add directory .

Step 4: If you need to delete or modify one user, please select the user, click Del button or Modify button to delete or modify.

10.4 Log

Log system store your operation for the system, you can view the record time, user, operation, device IP, lens ID and device ID.

- Query steps:

Step 1: Select the start time and end time.

Step 2: Enter the user name.

Step 3: Select log types, including five types, such as all types, liveview, playback, login and system settings.

Step 4: Click query button, results will appear in the directory.