

User Guide

HP4 IP PTZ CAMERA



V1.1

Content

Connection Diagram	2
Struture Demension	3
Schematic Diagram of TF Card Location	3
Camera's IP Address Assignment.....	4
Web Interface Access	5
Web Configurations	6
1.1 To setup the camera Time & Date.....	6
1.2 To name the camera title.....	7
1.3 TF memory card installation (optional)	7
1.4 Playback and Download video (optional)	8
1.5 Smart phone p2p remote access by scanning QR code (optional)	9
1.6 To setup Smart Human Detection and Vehicle Detection.....	9
1.7 * To setup Smart Line Crossing Detection.....	11
1.8 * To setup Smart Face Detection.....	12
1.9 * To setup Smart Perimeter protection.....	13
Smartphone Access.....	14
Working with NVR	16
Appendixes for Advanced Commands	17
Installation Tips.....	19

Troubleshooting	19
Specifications.....	20

Connection Diagram

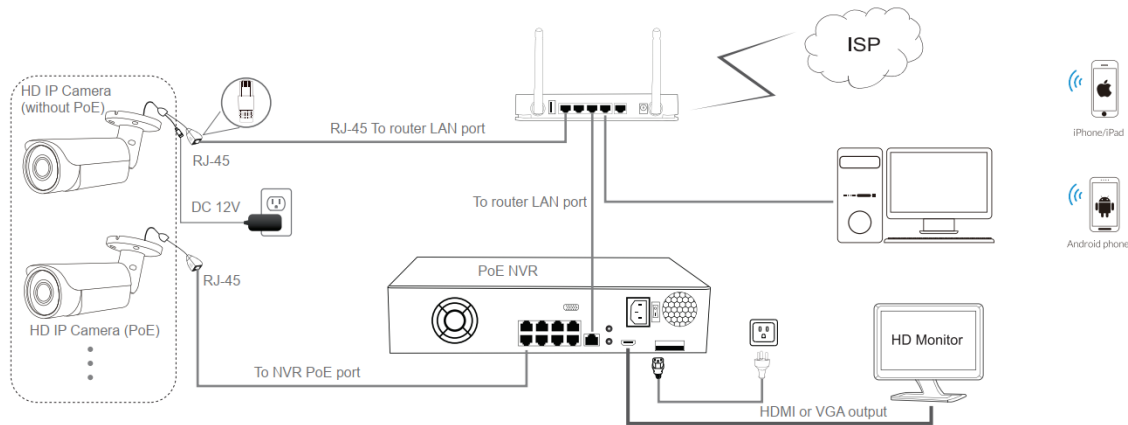


Figure 1: Working With PoE NVR

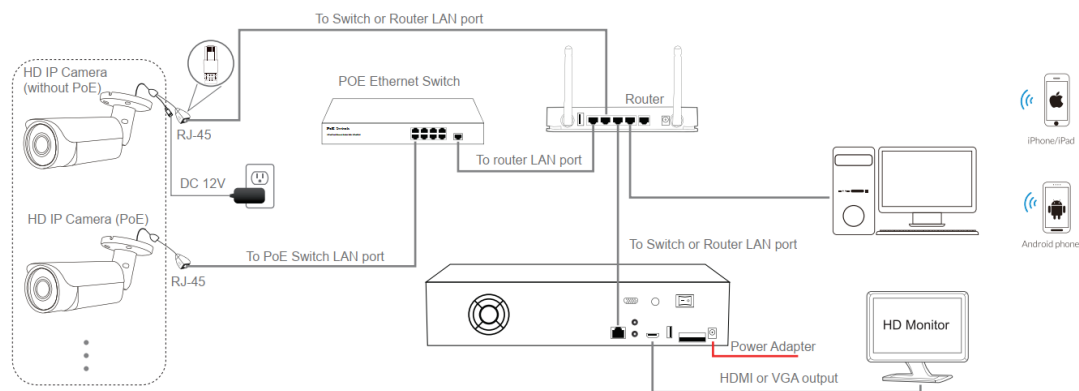


Figure 2: Working With PoE switch and NVR

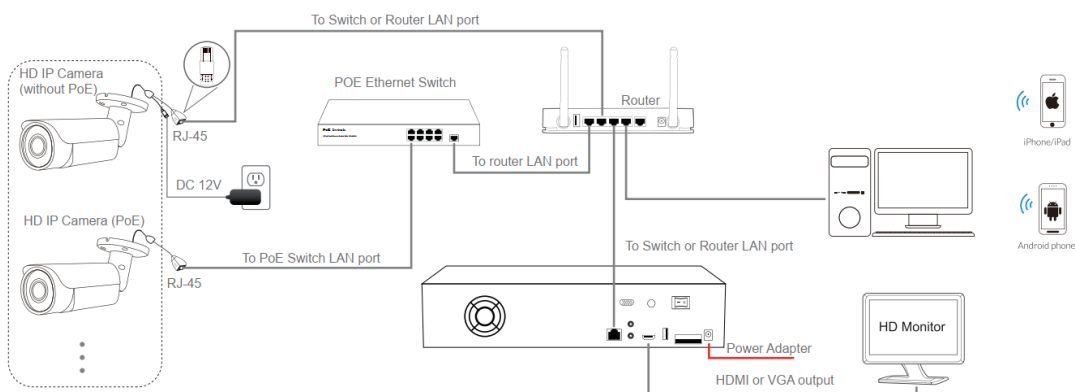
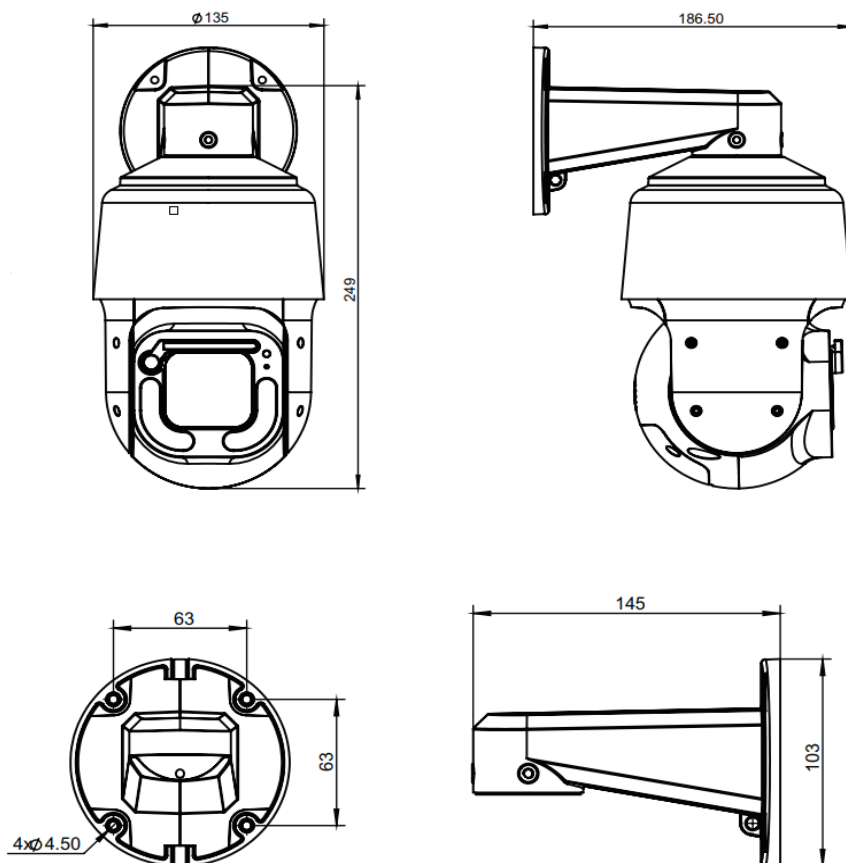
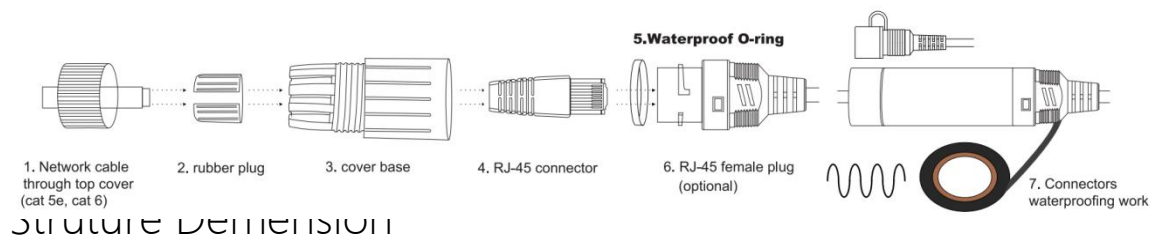
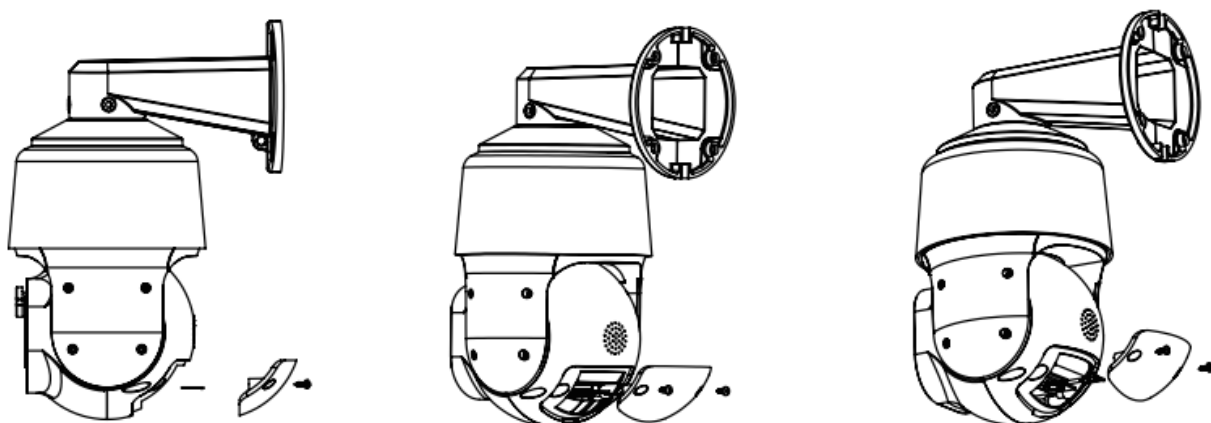


Figure 3: Waterproofing work (network connector)



Schematic Diagram of TF Card Location



Camera's IP Address Assignment

Note:

- Make sure the camera is powered on and connect to your LAN network before access the camera via web browser.

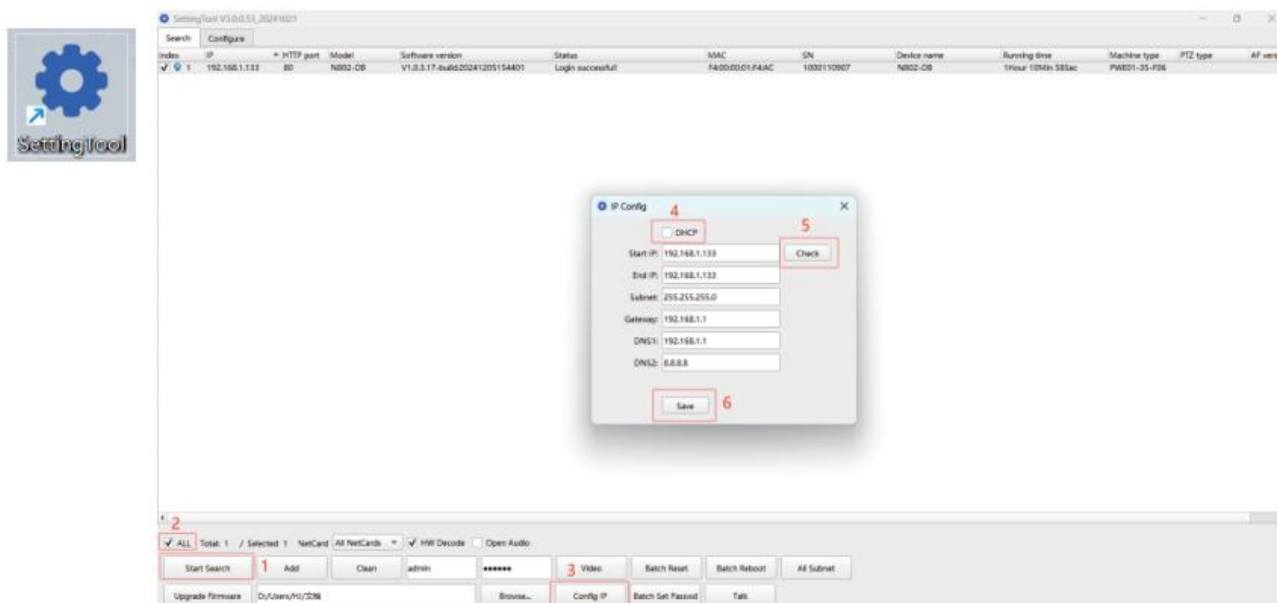
Tips:

- Obtaining IP settings automatically by DHCP.

The camera's default network configuration is DHCP mode. You can assign IP settings automatically from the LAN router or DHCP server. Otherwise, the camera will set its IP address to 192.168.0.123 in a few seconds for local access. The camera will save the obtained IP settings to static configuration after 24 hours and continue running to keep your system working more stable.

- It is highly recommended to download our free GWSECU IP Config Tool "SettingTool" to change the IP address to the same subnet. It can be downloaded at the following web page:
<https://www.gwsecu.com/support/?sortID=1>

2.1 Install the Setting Tool and follow up the steps as the picture below.



2.2 Click Start Search and all your cameras in the LAN will be listed in seconds.

Web Interface Access

Default IP address: 192.168.0.123 (DHCP)

User Name: admin

Password: 123456

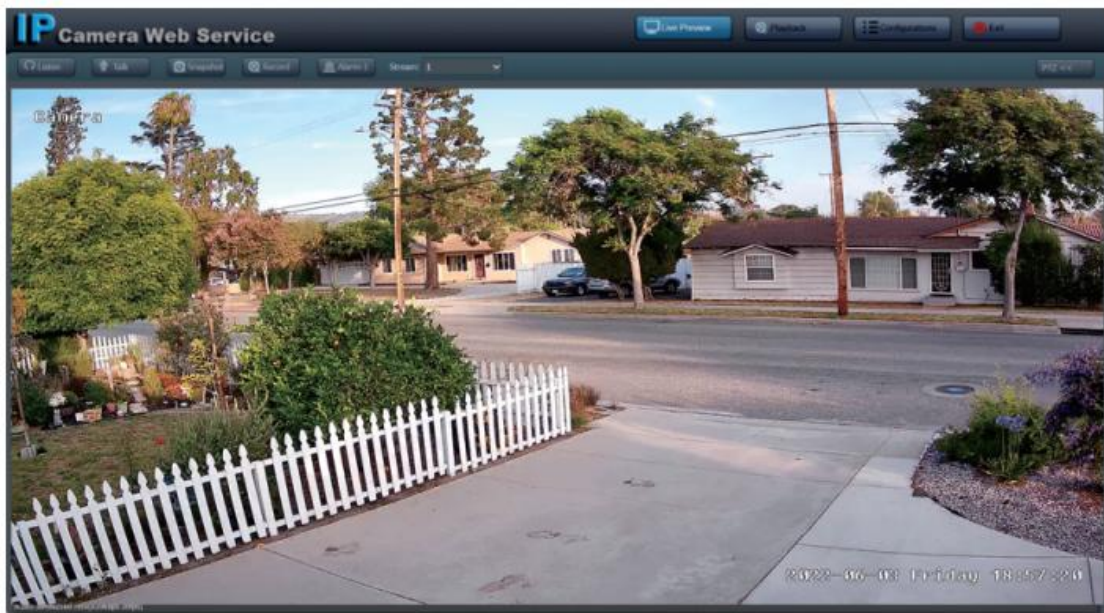
Note:

- The camera can be accessed in most mainstream web browsers including Edge, Chrome, Firefox, Safari, etc. using the camera's IP address.
- A Windows computer is more convenient to setup and troubleshooting.

3.1 Use the IP address of the same subnet as your computer to access the camera in the web browser.

3.2 At the first-time login, the browser may require a .exe plugin. Please download and install it without worry about the security. After restart or refresh your web browser and allow the plug-in player to

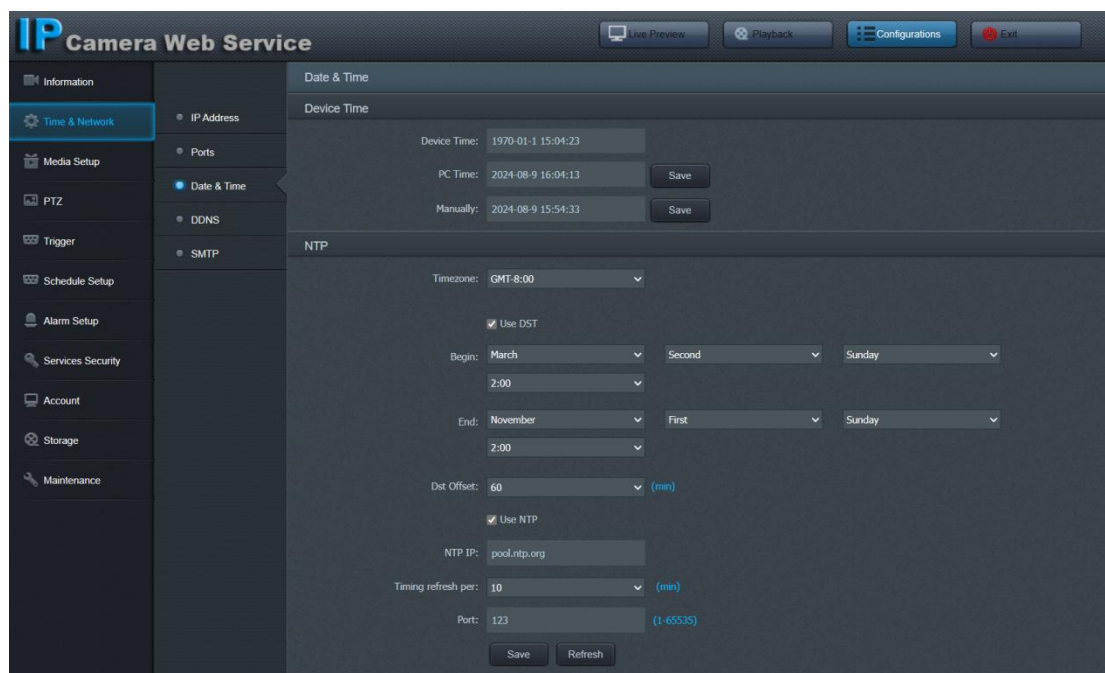
run. The live video will start playing automatically after login successfully.



Web Configurations

1.1 To setup the camera Time & Date

- Configurations > Time&Network > Date&Time



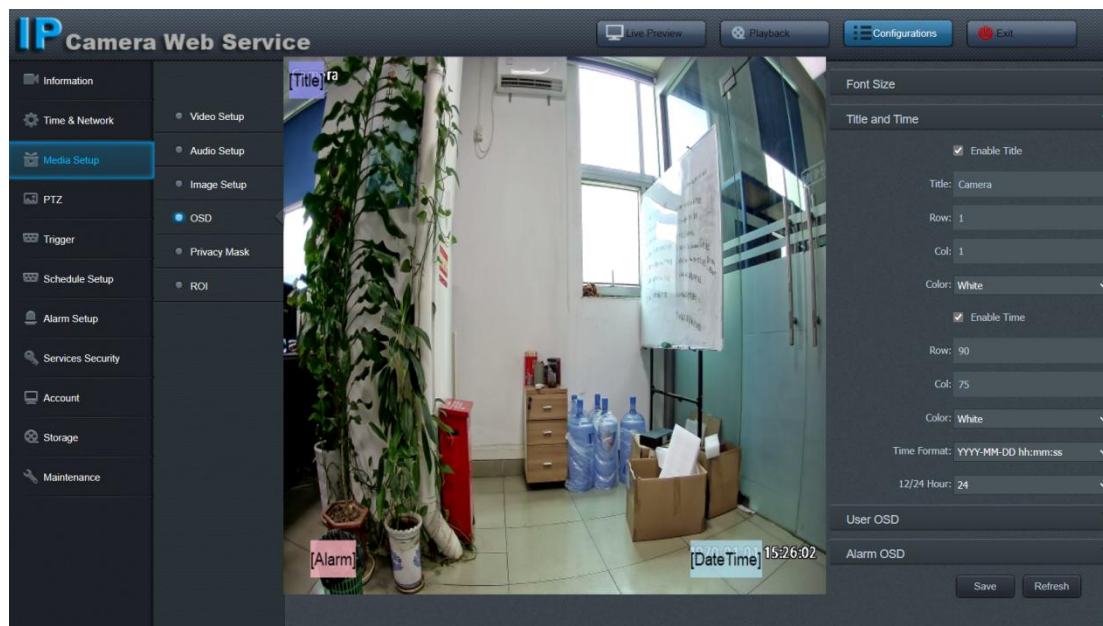
There are two time update modes available - Manual (Sync with PC) and NTP.

DST (daylight-saving time) is available for time offset adjust automatically.

NTP (network time protocol) is used for scheduled getting correct date and time from Internet automatically.

1.2 To name the camera title

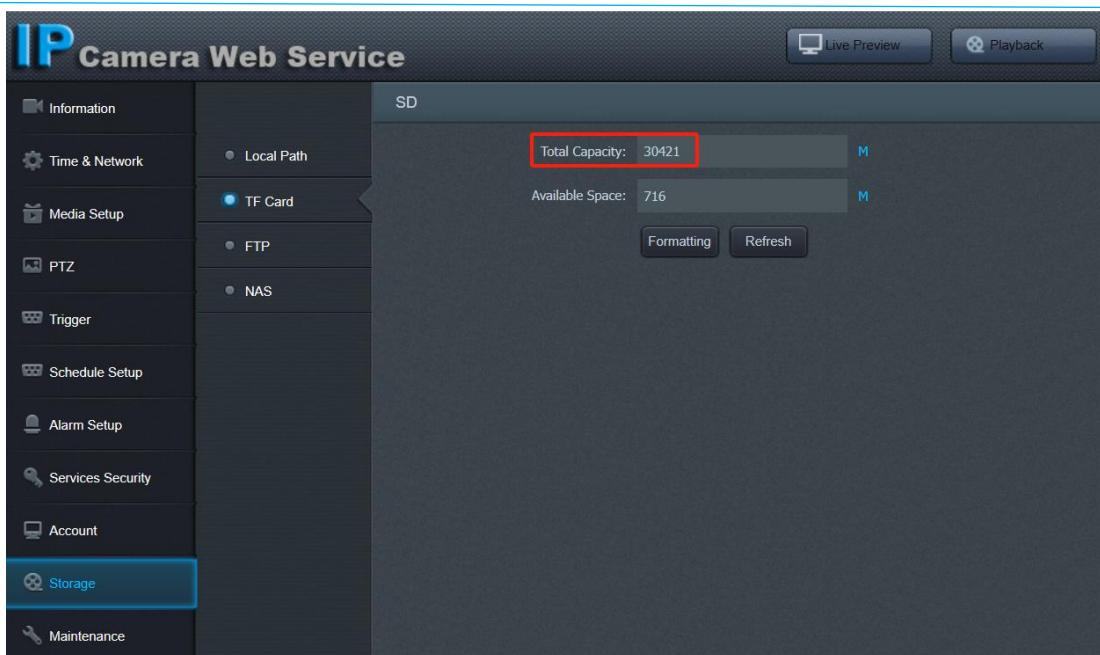
- Configurations > Media Setup > OSD



Modify the title as you need, drag the items to adjust the showing position (if needed), click Save.

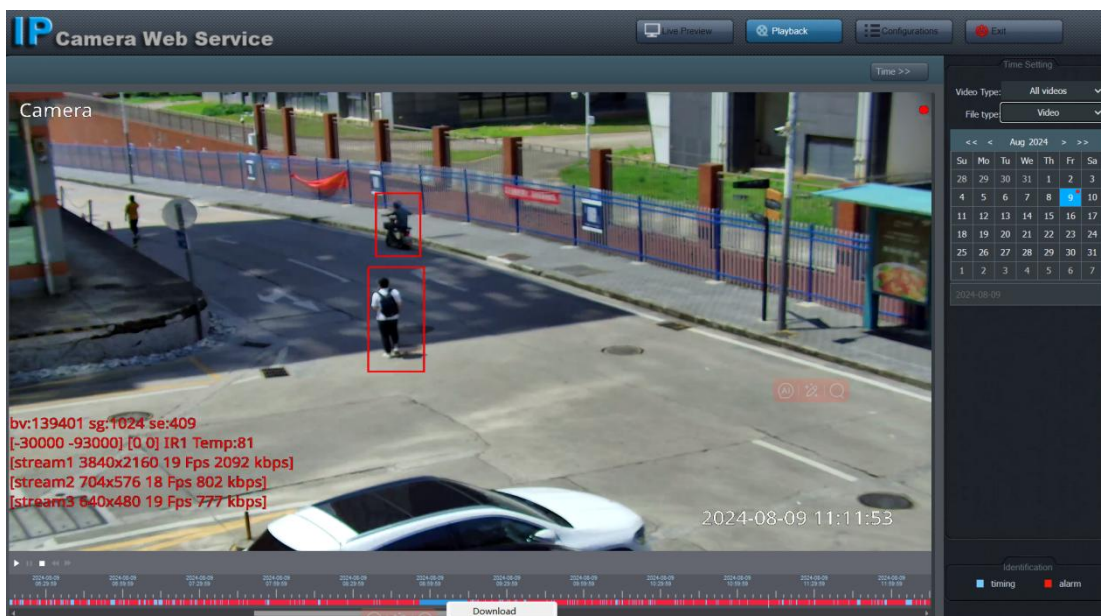
1.3 TF memory card installation (optional)

- Configurations > Storage > TF Card (with Micro-SD slot only)



It is suggested to install the memory card (Class10: 32GB - 512GB) for local storage if you need playback from camera.

Once memory card inserted, camera will format it, show capacity and start 24 hours recording with a red status icon at the top-right corner of the video automatically.



1.4 Playback and Download video (optional)

When memory card installed there is a red dot icon at the live video top-right corner, user can search and playback the inside videos and pictures.

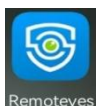
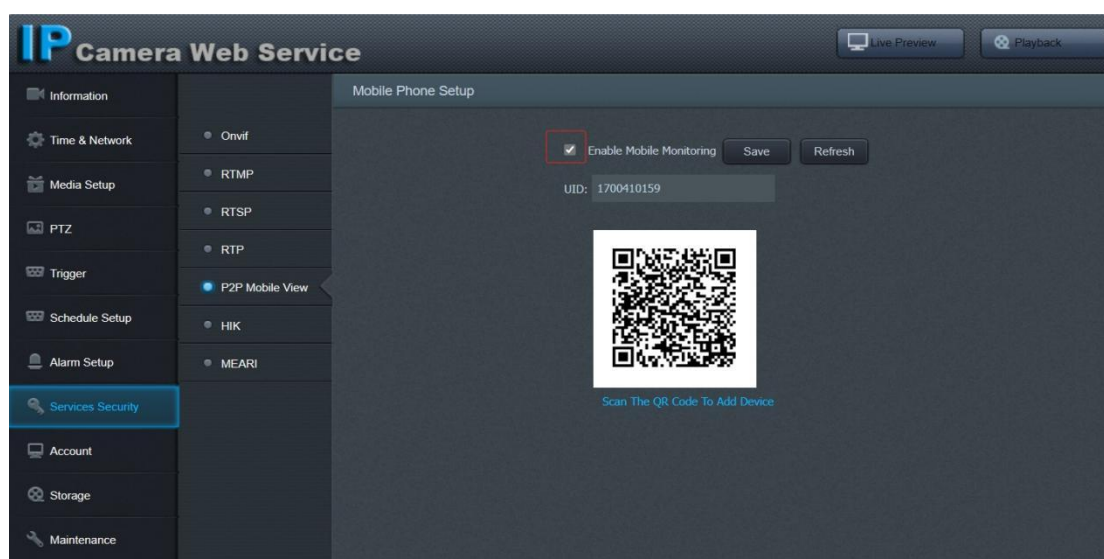
Playback: click Playback button, select desired date from right calendar, double-click the time bar (red is event recording, blue is normal record).

Backup: scrolling mouse wheel to zoom in on time bar, drag to select the video clip, right-click and click the Download menu.

File path: C:\Users\<your name>\AppData\Local\NsdPlayerV4\record

1.5 Smart phone p2p remote access by scanning QR code (optional)

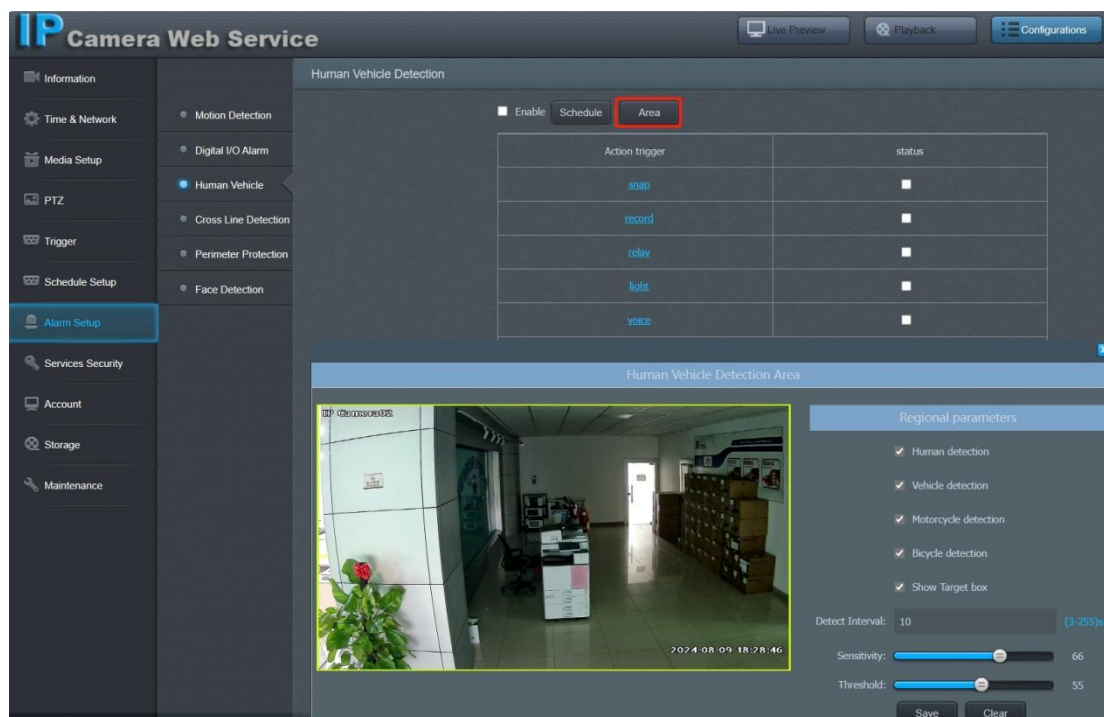
- Configurations > Services Security > P2P mobile view (Enable manually)



1. Install app "remoteyes" from Google Play Store or Apple Store
2. Scan camera p2p QR code to add device

1.6 To setup Smart Human Detection and Vehicle Detection

- Configurations > Alarm Setup > Human Vehicle Detection



Detection target: human / vehicle / bicycle

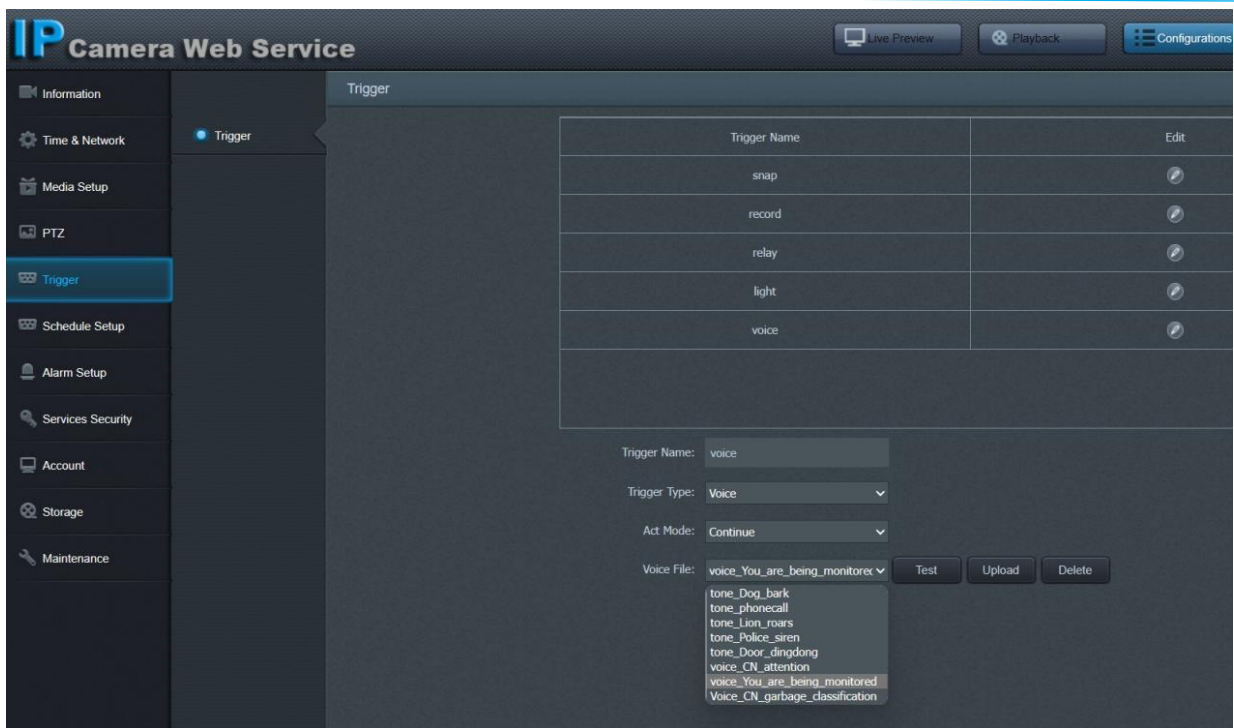
Detection Area: default full-screen / user-defined drawing

Show target box: display a rectangular border to surround the target

Threshold: filter small target

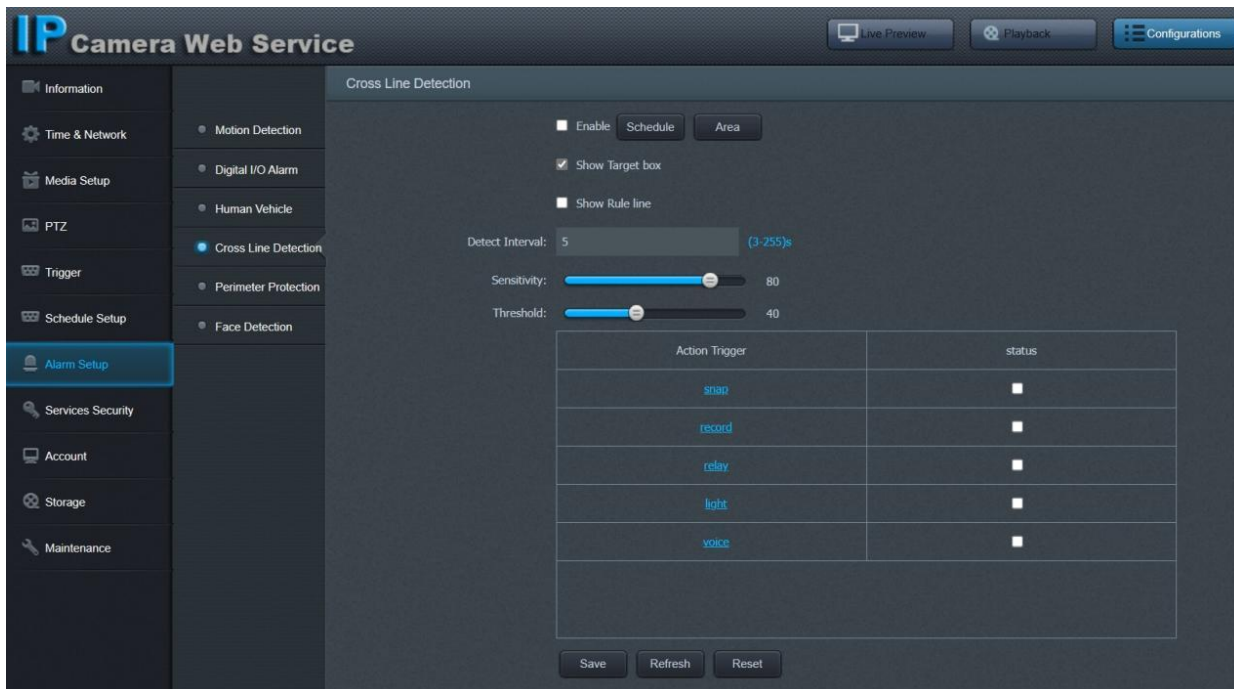
Action trigger:

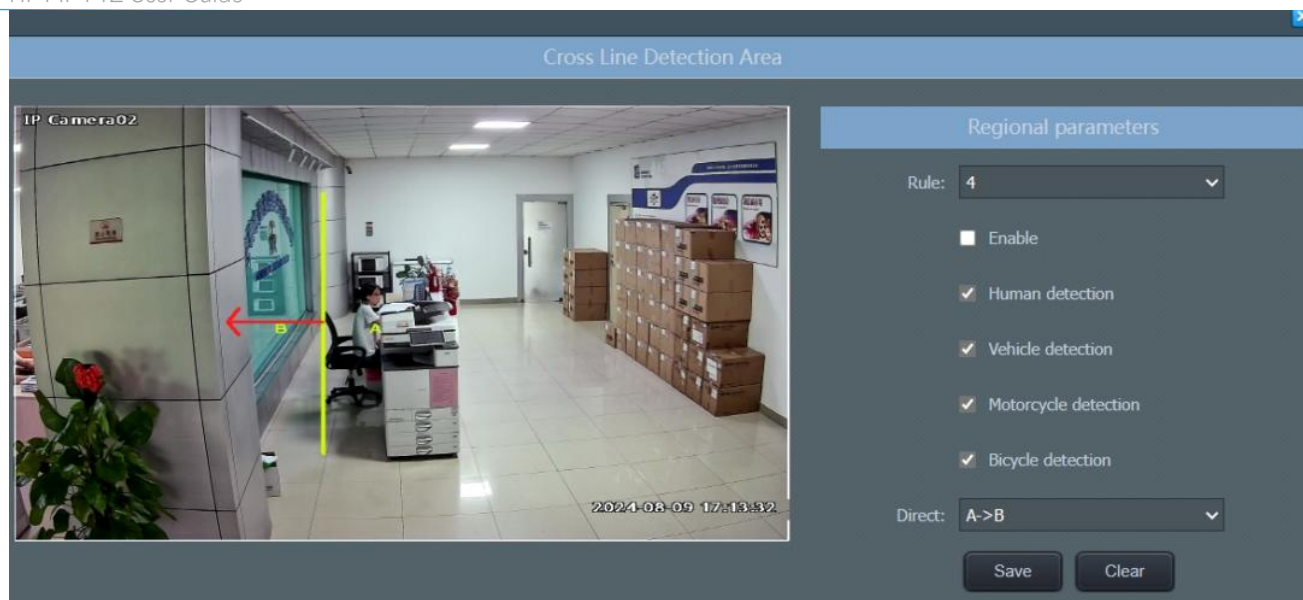
- snap -- trigger snapshot when event happen;
- record-- trigger snapshot when event happen;
- relay -- trigger alarm out relay and red&blue flashing;
- light -- trigger white lights flashing as warning;
- voice -- trigger loud speaker voice or tones playing



1.7 * To setup Smart Line Crossing Detection

- Configurations > Alarm Setup > Cross Line Detection

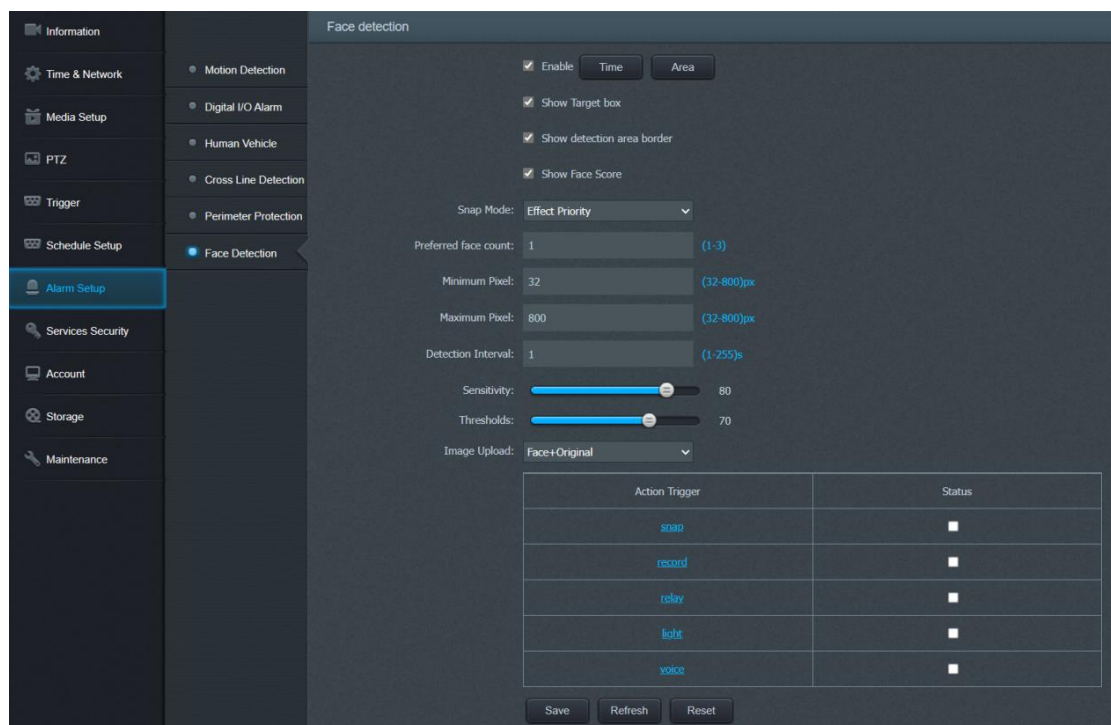




- Setup steps:
1. check the main enable checkbox;
 2. click "Area", select a rule and check the sub enable checkbox;
 3. drawing alarm rule line when needed;
 4. select detection target and moving direction (A->B, B->A, A<->B);
 5. select the trigger actions when desired.

1.8 * To setup Smart Face Detection

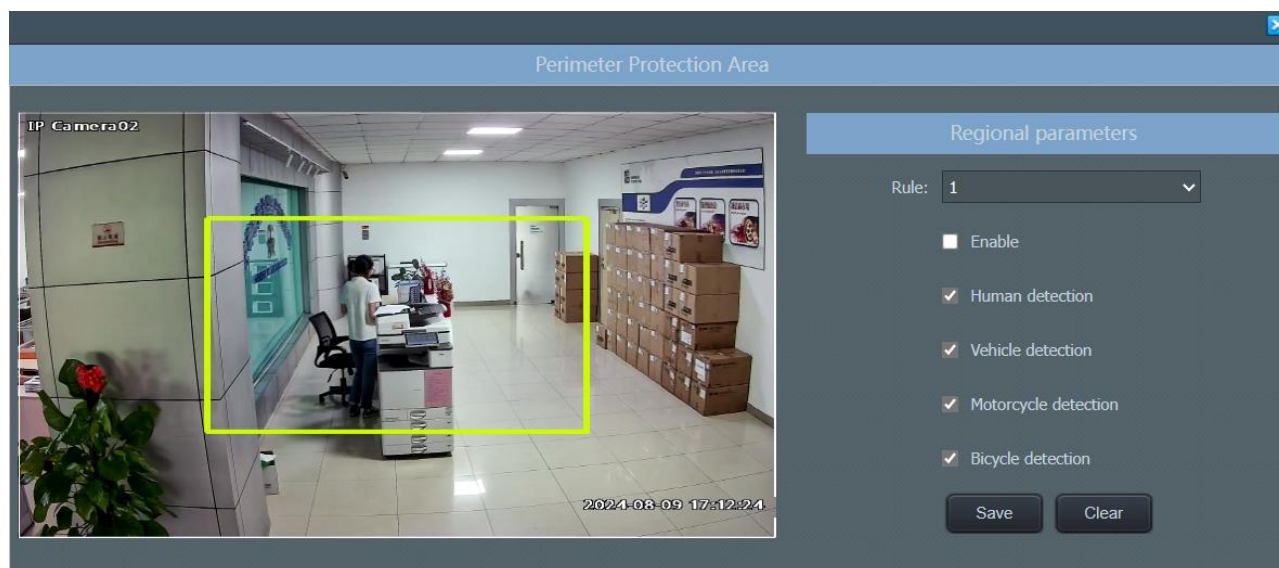
➤ Configurations > Alarm Setup > Face Detection



- Setup steps:
1. check the Enable checkbox;
 2. click "Area" (default full-screen)
 3. drawing detect area or schedule when needed;
 4. select the trigger actions when desired.

1.9 * To setup Smart Perimeter protection

- Configurations > Alarm Setup > Perimeter protection



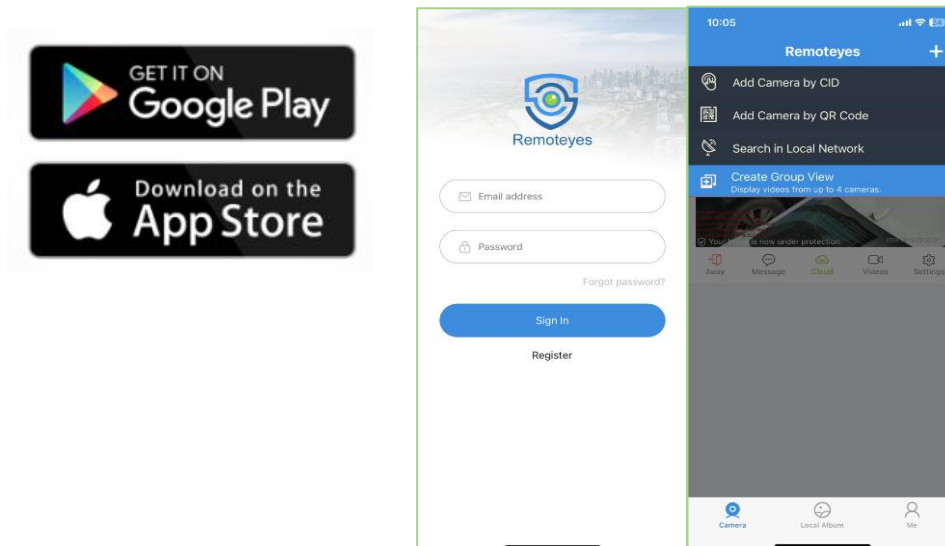
- Setup steps:
1. check the main enable checkbox;
 2. click "Area", select a rule and check the sub enable checkbox;
 3. drawing alarm rule block when needed;
 4. select detection target
 5. select the trigger actions when desired.

Tips:

- Using the P2P UID and QR code, you can access the camera remotely anywhere via smart phone with Internet access. Please register an account via mobile phone after installing the "remoteyes" APP from Apple Store or Google Play Store, then log in and add your camera to start previewing.
- If the Login Status shows Offline, please check your Internet connection and IP camera TCP/IP Network configurations. Please make sure to use a valid IP address, Gateway and DNS server in the TCP/IP Network settings.

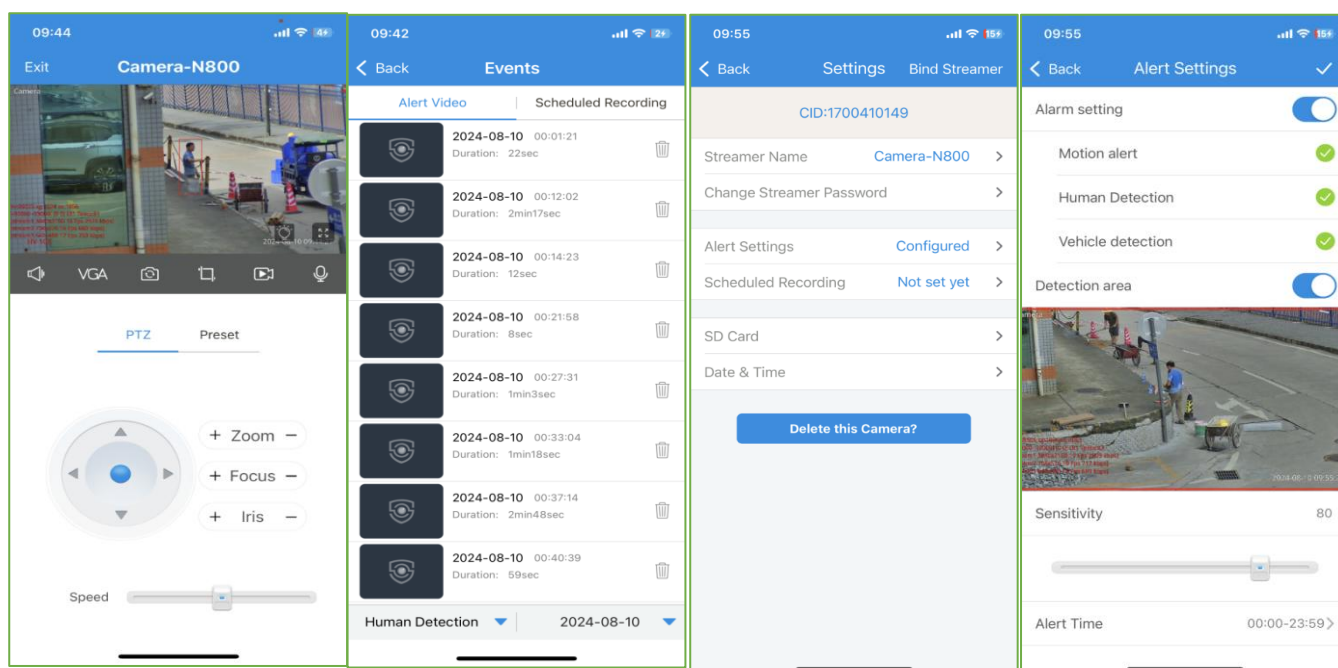
Smartphone Access

1.1 Scan to download the Remoteyes APP, or visit the Apple Store or the Google Play Store.










1.2 General use steps

- For new users, please tap CREATE NEW ACCOUNT to register an account.
- Tap "+" select "Add Camera by QR Code".
- Get into the camera QR code web page (Configurations > Services Security > P2P mobile view (Enable manually))
- Put the IP camera QR code in the app effective scan area to finish adding.
- Tap the camera list to start live video.



Function description

Icon	Function description
 Away	Away / Home: push notifications or not
 Message	Additional Cloud paid service
 Cloud	Additional Cloud paid service
 Videos	Video playback
 Settings	Go to camera settings
	Switch HD or SD live resolution
	Rotate camera image direction
	Take snapshot
	Record video clip
	Start two-way audio intercom
	Change night mode (IR / Color / Auto)

Note:

if you cannot connect the camera, please check your Internet connection and verify the IP address, gateway, and DNS setting in the camera.

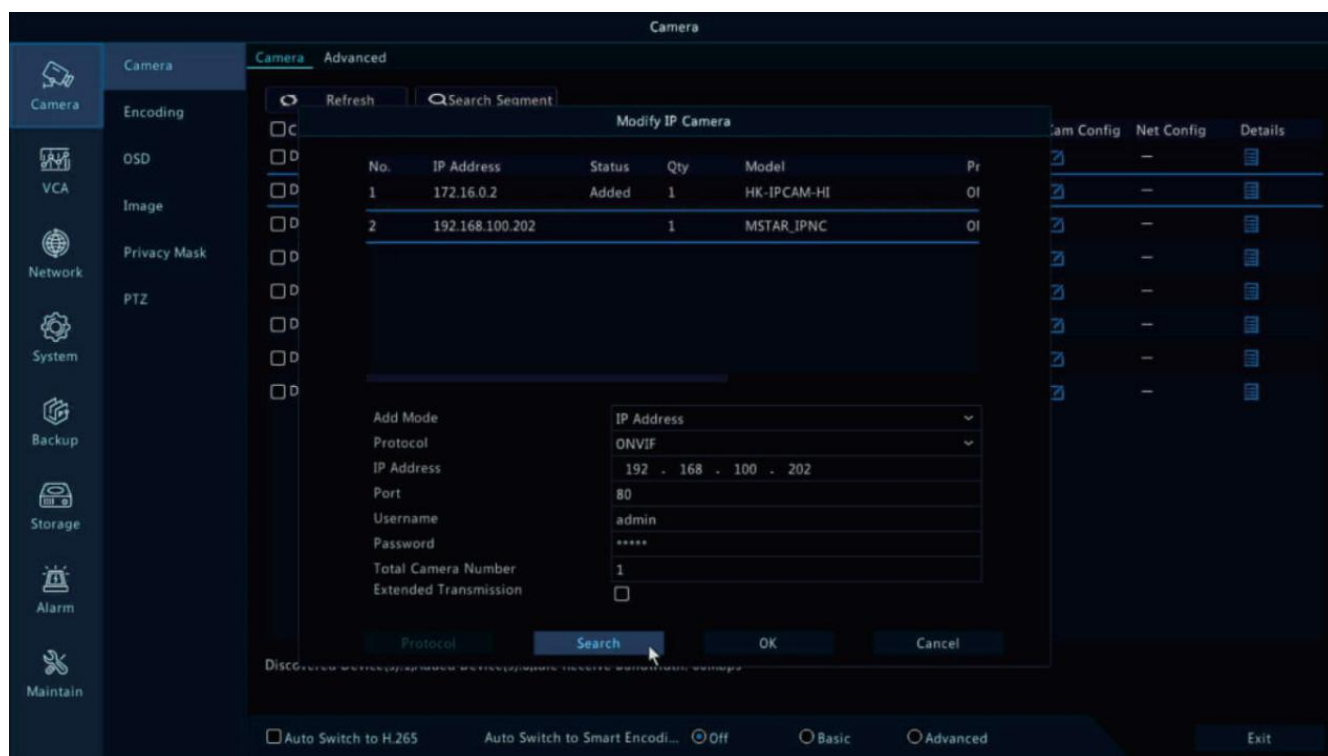
The Cloud login status should be online, which means the camera has registered to the cloud server.

You may also want to connect your phone to WiFi for better performance.

Working with NVR

The IP camera supports standard ONVIF protocol and it can be added to third-party video recorder.

Some of the models support both H.264 and H.265 encode mode. The H.265 encode cameras can compress the video data to a very low bit rates which allows more video data storage than normal H.264 camera. Before pairing cameras to the NVR, make sure the NVR and cameras have valid and matching IP address scheme.



Note: Some of the PoE NVR supports Plug & play, which allows you to get video without manually search and add. If Plug & play feature is not available or not compatible, please follow the NVR manual steps and select ONVIF protocol as the pairing protocol. (Camera default password: 123456)

If the POE NVR can not discover the connected camera or can not display the camera video, please

check its internal POE interface IP configuration and make sure all connected cameras and NVR POE interface are in the same subnet schema.

Appendixes for Advanced Commands

Functions	Commands
Start wiper	Call 71
Tracking Home position	Set 88
Start preset tracking	Call 97
Start patrol tracking	Call 98 (use patrol 1)
stop tracking	Set 96
Horizontal speed	Set 150 then set n (n=1-100)
Vertical speed	Set 151 then set n (n=1-100)
IR mode Auto	Call 137 (default)
IR ON	Call 138
IR OFF	Call 139
IR sensitivity	Set 91 then set n (n=1-10, default 6)
IR power	Set 122 then Set n (n=1-10, default 8)
Start horizontal 360 scan	Call 120
Horizontal speed	Set 121 then Set N (N=1-100 default 50)
Start patrol 1	Call 101 (preset 1-32)
Patrol speed	Set 115 then Set N (N=1-100 default 80)
Patrol dwell time	Set 123 then Set N (N=3-10 default 5)

Left position	Set 81
Right position	Set 82
Start A - B scan	Call 83
Stop A - B scan	Set 83
A - B scan speed	Set 141 then Set N (N=1-10 default 5)
Enable Home Position	Set 125 (default 2 minutes return home position)
Remove Home Position	Call 125
Go home position time	Set 126 then Set N(N=1-10, default 2 minutes return home position)
Disable Idle action	Call 131
Idle action type	Set 131 then Call 1 : Return Home position (preset 1) Set 131 then Call 97: preset tracking Set 131 then Call 98: patrol tracking Set 131 then Call 83: A - B scan Set 131 then Call 120: horizontal 360 scan
Idle action start time	Set 132 then Set N (N=1-30,default 2 minutes)
Focus mode	Set 77 then Set N (N=1 zoom,N=2 zoom or move, N=3 Auto)
Focus distance	Set 78 then CALL N (N=1 1.5m,N=2 3m, N=3 6m, N=4 infinity)
Erase All presets	Call 100
Init H/V position sensor	Set 107 then Call 64
Reset Factory	Call 106 then Call 64

Installation Tips

- For optimal video quality, the right place for the camera should be carefully selected. Before drilling the holes for the bracket, installing any device and firmly fixing the cable, check the location of the camera for possible backlighting.
- Do not place two cameras face to face in the same area. Or it may result in poor image quality because of reflection by spotlights.
- Do not try to direct the camera into the sunlight and consider the course of the sun.
- It's suggested to power on the camera indoors for a few minutes before installing it outdoors under cold conditions.

Troubleshooting

Why can't I access the camera default IP address 192.168.0.123 via web browser?

- The camera is working at DHCP mode by default, it will obtain the IP settings from router automatically. Please install the SettingTool to find the camera's IP address. The camera IP address will be 192.168.0.123 if no router in the LAN.

How to reset the password?

- If you lost the password or want to reset the camera setting, please install the SettingTool to search the camera IP address and click Batch Reset button. Also, if the camera with a built-in hardware reset button and easy touched, just keep pressing it around 10 second.

How to fetch the RTSP video stream and http snapshot?

- VLC test Main Stream: `rtsp://admin:123456@IP:554/media/live/1/1`
- VLC test Sub Stream: `rtsp://admin:123456@ IP:554/media/live/1/2`
- Low resolution snapshot: `http://IP/cgi/special.cgi?act=snapshot&stream=1`
- HD snapshot: `http://IP/cgi-bin/snapshot.cgi?act=snapshot&stream=0`

How to Add IP camera to NVR?

- Make sure the NVR and IP camera are the same IP subnet. (eg. NVR:192.168.1.x, and IP camera:192.168.1.y)

- Try changing the protocol to ONVIF

How to make the NVR record in motion detection mode?

- Change the NVR record mode to Motion Detection mode
- Check the NVR screen MD icon and try playback
- Please refer to your NVR manual for NVR motion record option, camera also should enable motion detection.

Where can i control the motorized auto focus lens zoom?

- 1) Using the camera's web interface
- 2) Control zoom by mobile app
- 3) Go to the setting tool configuration tab and select PTZ tab window
- 4) Find the PTZ menu in your NVR to control lens zoom

Which kinds of third-party security software can be compatible with?

Milestone, Avigilon, Pelco VxToolbox, Blue Iris, iSpy, Synology, Digifort ...

Specifications

Hardware Features

Power: By PoE / DC 12V adapter

Day/Night Mode: Auto Switchover

Operating Temperature: -20°~60°

Operating Humidity: 10%~90%

Waterproof Rating: IP67

For more specifications, please visit the website www.gwsecu.com .